

AGENDA NO. 1
FILE NO. 2017-0209

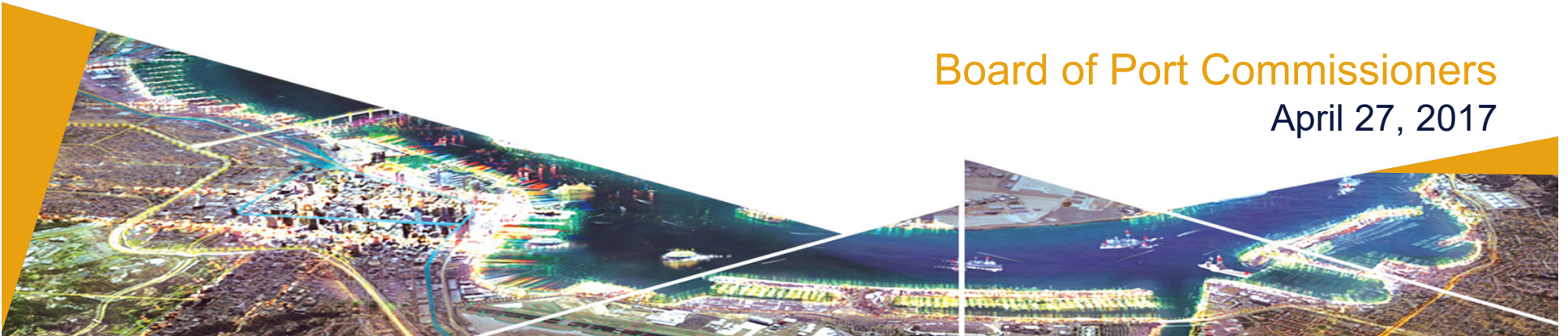
SPECIAL BOARD MEETING

**Integrated Planning
Port Master Plan Update**

**Workshop No. 2 Regarding the
Draft Port Master Plan Update**

Board of Port Commissioners
April 27, 2017

PLANNING & GREEN PORT





AGENDA NO. 1
FILE NO. 2017-0209

SPECIAL BOARD MEETING

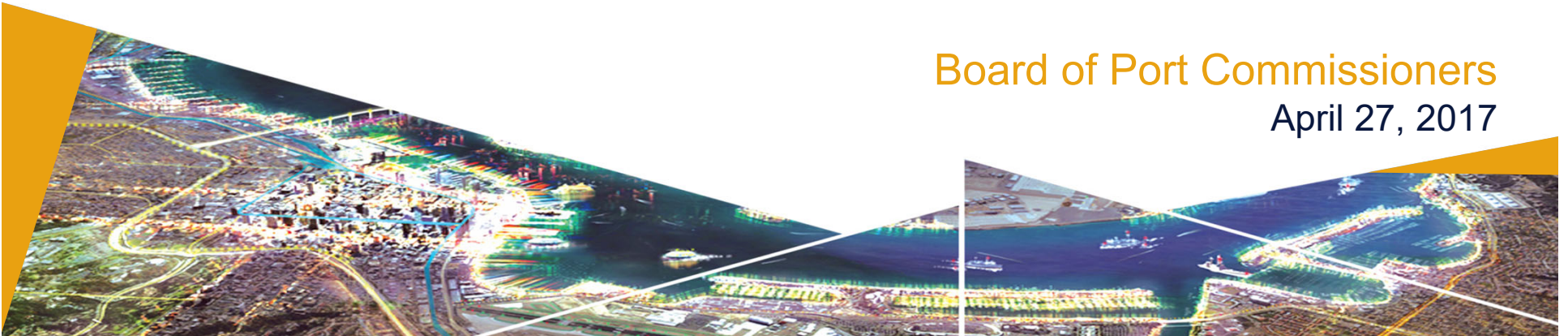
**Integrated Planning
Port Master Plan Update**

**Workshop No. 2 Regarding the
Draft Port Master Plan Update**

Board of Port Commissioners

April 27, 2017

PLANNING & GREEN PORT





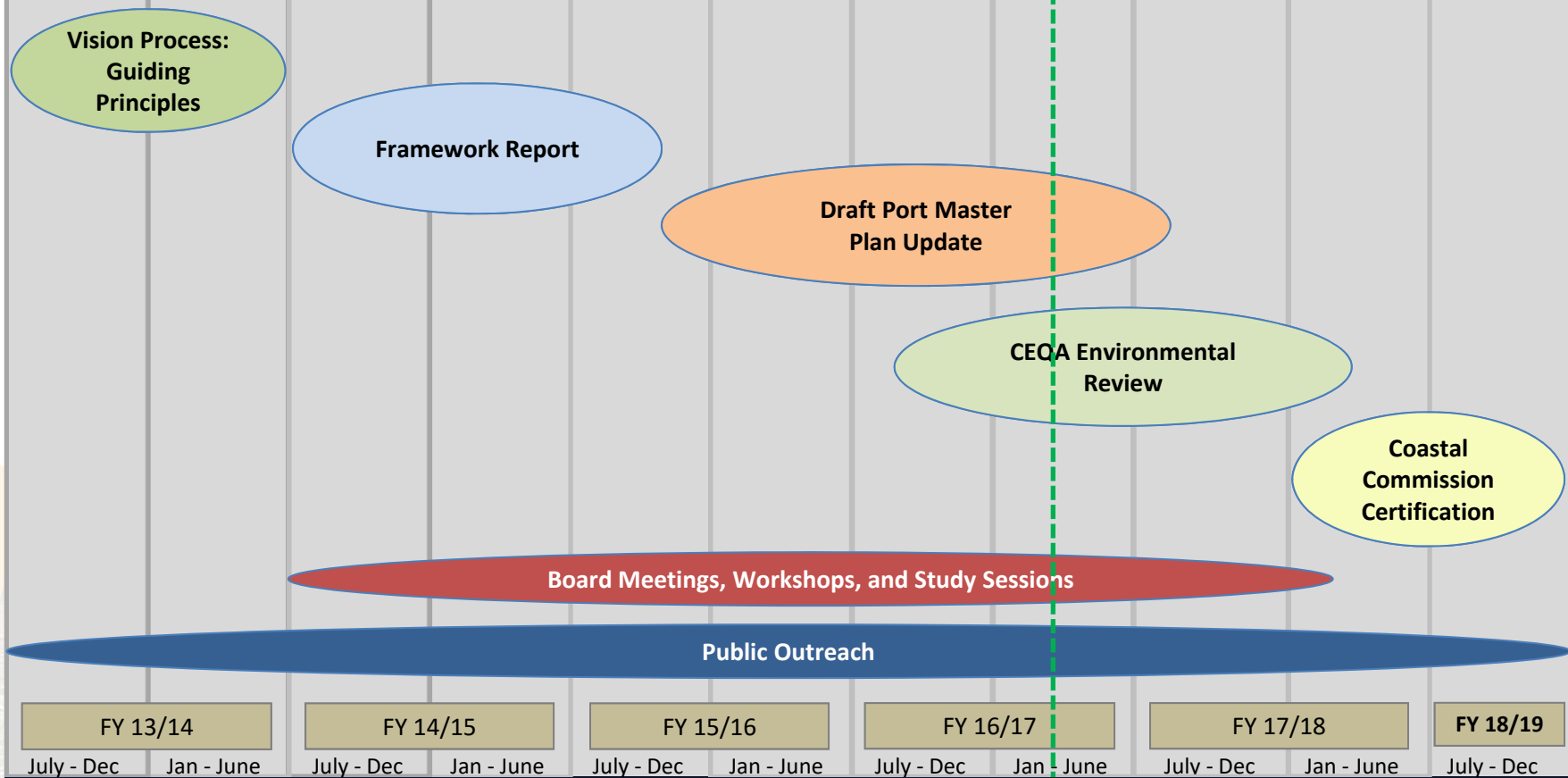


PROJECTS



GOALS

PLANNING PROCESS



v010317

Port Master Plan Update: Document Contents

1. Introduction

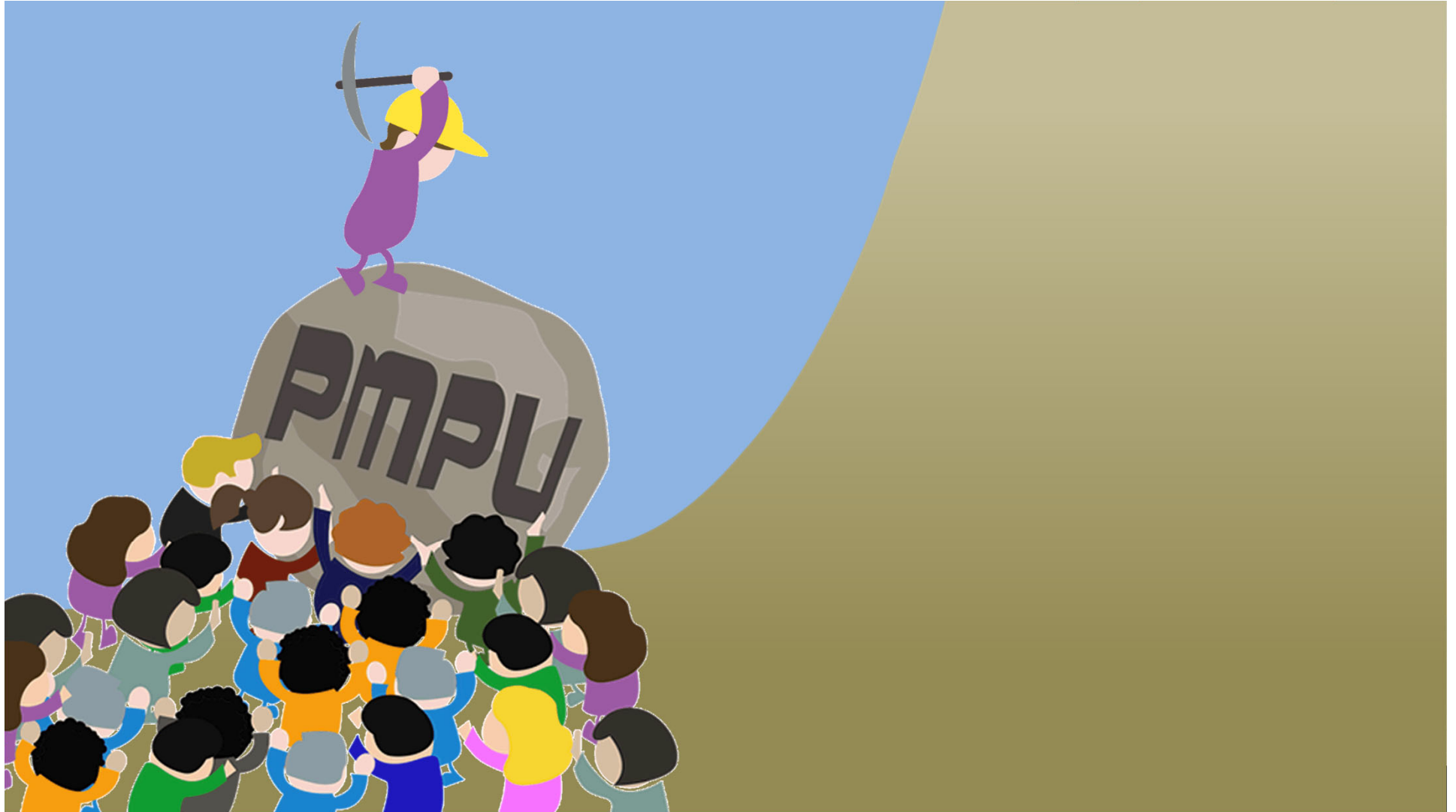
2. – 7. Elements

8. Planning Districts 1-10

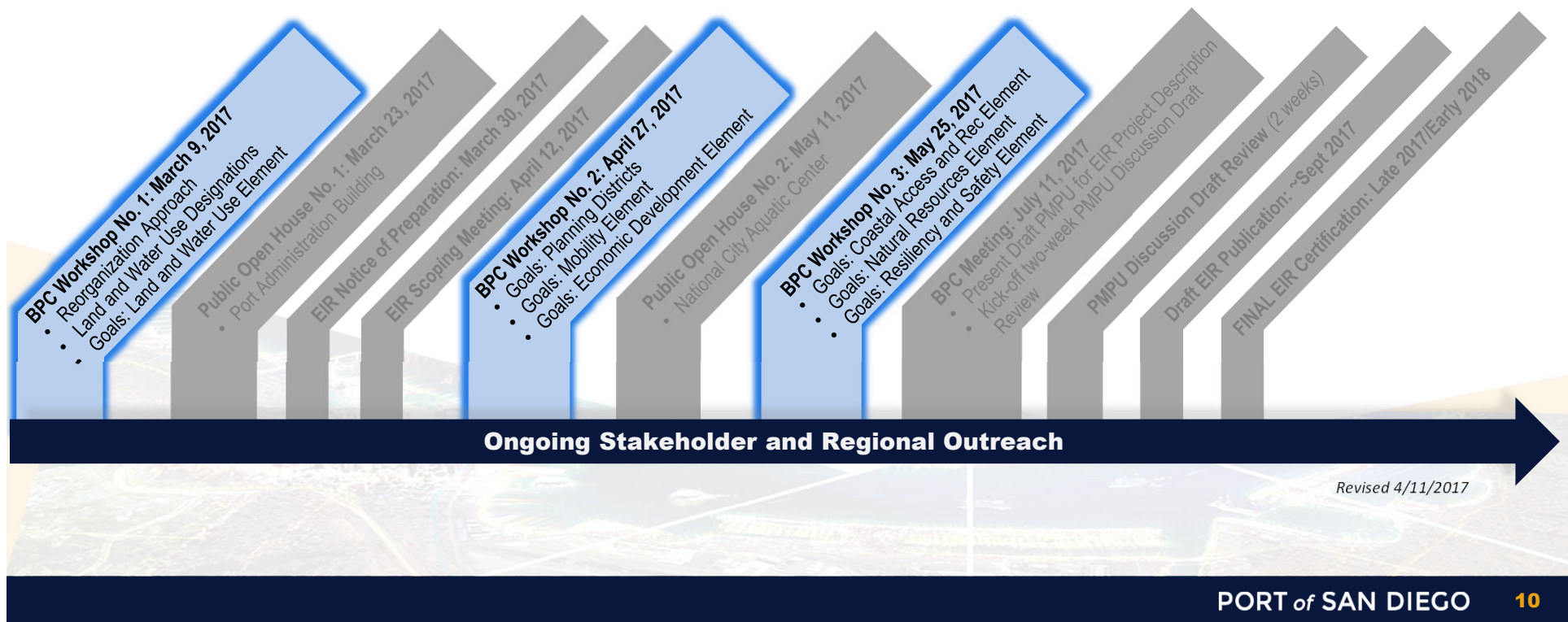
9. Definitions/Glossary

- 2. Land and Water Use
- 3. Mobility
- 4. Coastal Access & Recreation
- 5. Natural Resources
- 6. Resiliency and Safety
- 7. Economic Development





Port Master Plan Update: 2017 Public Engagement



Port Master Plan Update:

Public Outreach Effort

March 9 – April 26, 2017



Port Master Plan Update:

Public Comment

Approximately 10:30am

**1.A Goals: Mobility Element
and Economic Development
Element**

&

Approximately 2:00pm

**1.B Goals and Land and Water
Use Map: Planning Districts**

SAN DIEGO UNIFIED PORT DISTRICT

REQUEST TO SPEAK
Submit completed form to staff prior to Chair announcing the agenda item.

<input type="checkbox"/> In Favor	<input type="checkbox"/> In Opposition	<input type="checkbox"/> Non Agenda Public Comment
<input type="checkbox"/> Other (specify)		<input type="checkbox"/> Agenda Item No. 1-B
Date:		

PERSONAL INFORMATION:
The information requested below is voluntary. Any information provided on this form is a public record and subject to disclosure under the California Public Records Act.

Name: (Please Print) _____
Organization or Affiliation: (As applicable) _____
Title: _____
Address: _____
City/State/Zip: _____
Telephone Number: () _____
Email: _____

Speaking time is limited. You will have 3 minutes to speak. Written comments may be submitted to the District Clerk for inclusion in the agenda item.

If you are **PAID** to influence the Port Master Plan, you **MUST** register as a District Representative. You may fulfill this requirement by completing this form.

TIME LIMITS
Speaking time is limited. You will have 3 minutes to speak. Written comments may be submitted to the District Clerk for inclusion in the agenda item.

Port Master Plan Update:

Bike Rack

March 9, 2017



Port Master Plan Update:

Mixed-Use Overlay



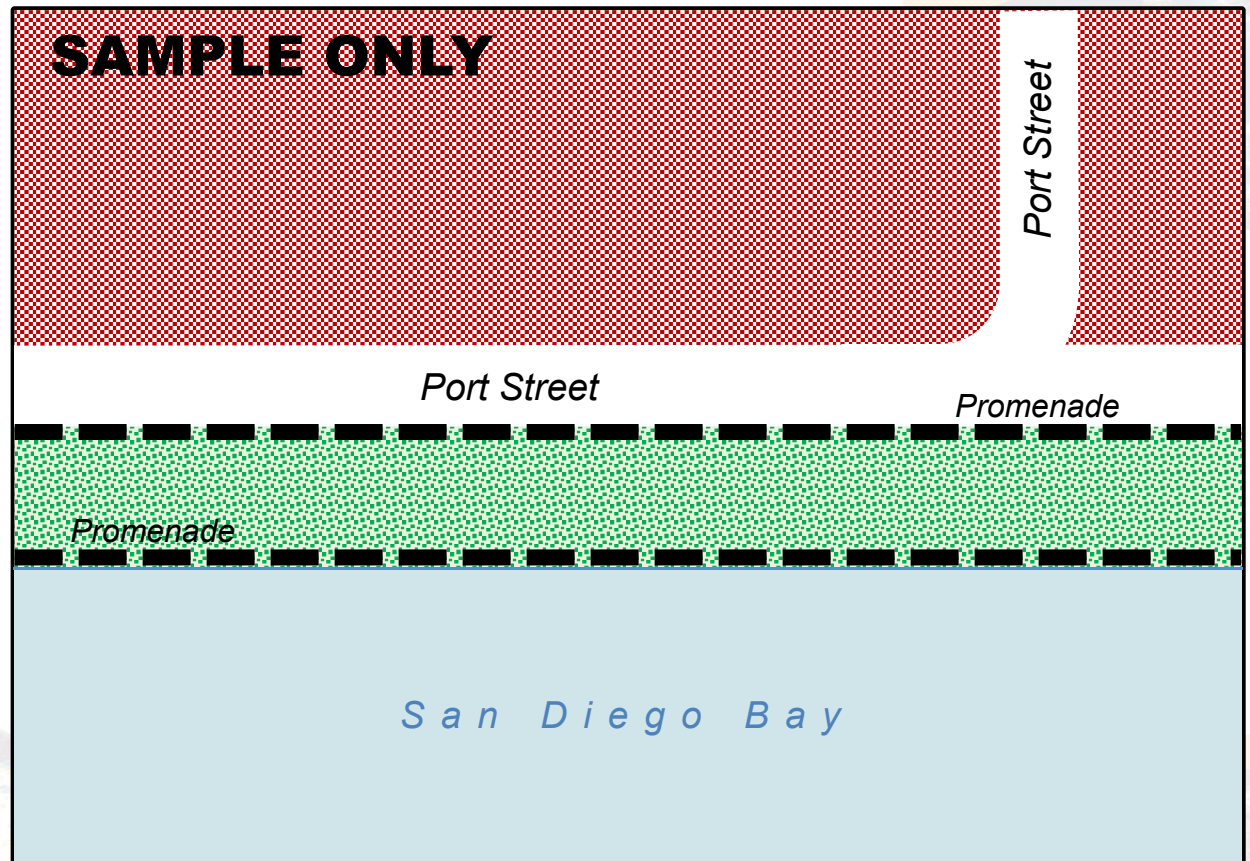
Port Master Plan Update:

Mixed-Use Overlay

 Commercial Recreation

 Park/Plaza

 Promenade



Traditional Arrangement

Port Master Plan Update:

Mixed-Use Overlay

 Mixed-Use Overlay

SAMPLE ONLY

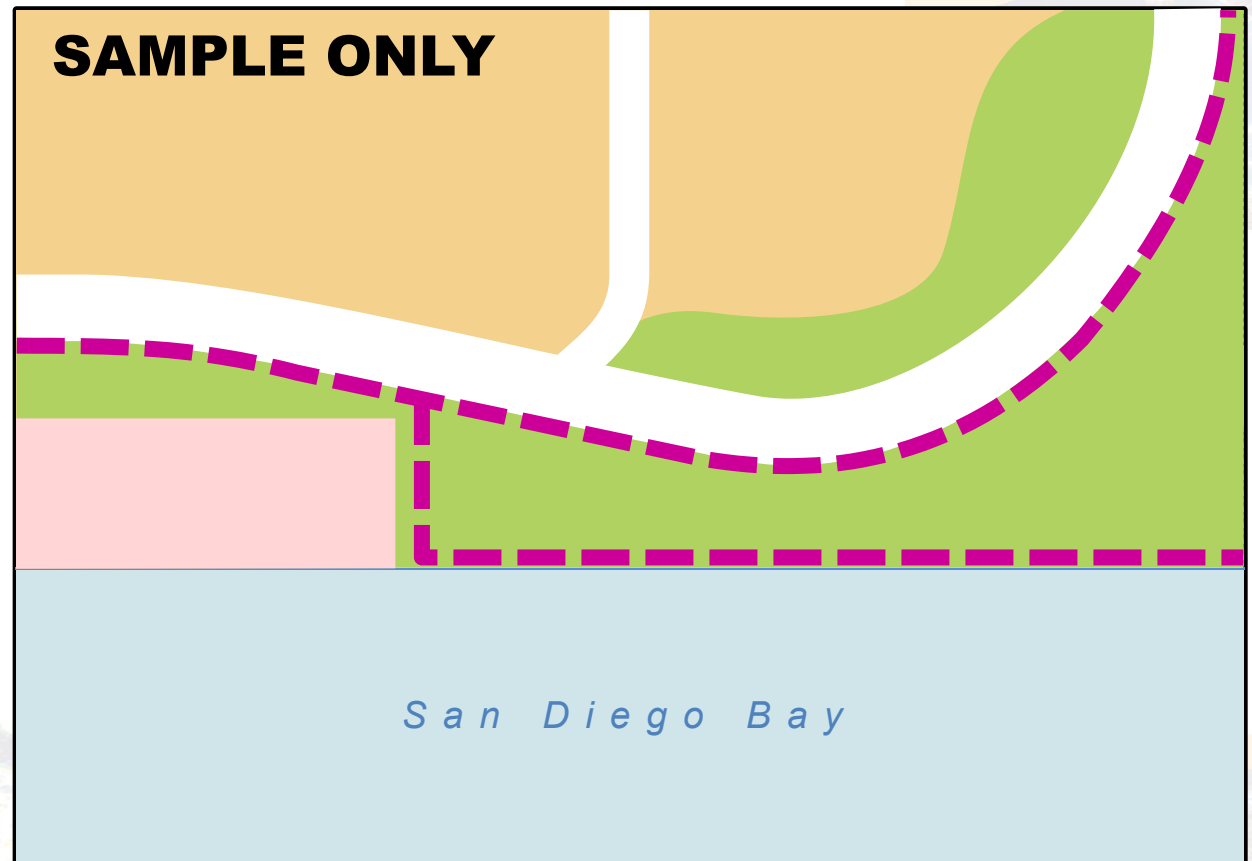
San Diego Bay

Mixed-Use Overlay

Port Master Plan Update:

Mixed-Use Overlay

-  Visitor-Serving Recreation Commercial
-  Commercial Fishing
-  Recreational Open Space
-  Proposed Promenade



Flexibility in Arrangement

Port Master Plan Update: Mixed-Use Overlay

San Diego



Land and Water Use Element: Revised Goals

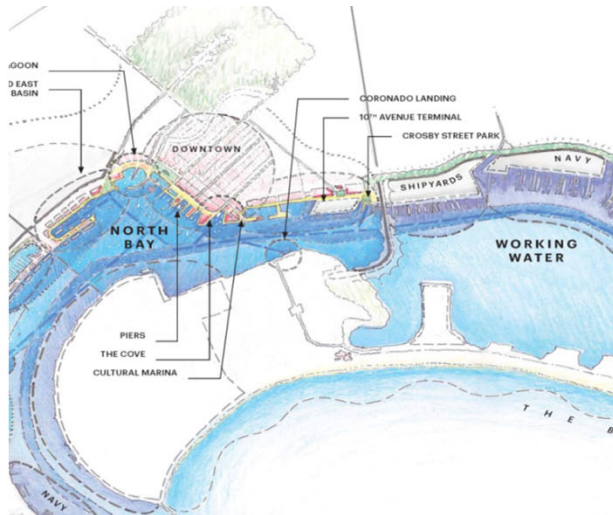
OPTION 1: Coordinated growth and development within District Tidelands that ~~is complementary to~~ considers applicable local, and regional, state, and federal plans

OPTION 2: Coordinated growth and development within District Tidelands that ~~is complementary to~~ considers applicable local and regional plans of our member cities, the United States Coast Guard, the United States Navy, and other relevant agencies



Port Master Plan Update:

Goals for Mobility Element



Goals for Mobility Element



Attachment L to Agenda File No. 2017-0209

PORT MASTER PLAN UPDATE Mobility Element

GOALS:

1. Efficient and convenient land and water access for the movement of people and goods to and from neighboring jurisdictions and throughout the District
2. Flexible and coordinated mobility, parking, and wayfinding strategies that:
 - support multiple modes of access;
 - enable an economically competitive freight transport system;
 - align fees and revenue with infrastructure investments;
 - adapt to market changes and technological advances;
 - provide sustainability co-benefits, such as air quality and greenhouse gas emissions reductions; and
 - encourage stakeholder investment
3. A comprehensive Green Necklace system with multi-modal public access points in proximity to attractions and activity centers
4. Provision and management of vessel berthing and vehicle parking through efficient site planning, strategic partnerships, and technological advances
5. Improved multi-modal connections to the San Diego International Airport and employment and commerce centers on District Tidelands

Unless otherwise denoted, the order of the goals and policies in the Port Master Plan have no legal effect and do not indicate a priority or preference.

Page 1 of 1



MOBILITY

Efficient and convenient
land and water access
for the movement of people and goods
to and from neighboring jurisdictions
and throughout the District



MOBILITY

Flexible and coordinated mobility, parking, and wayfinding strategies that:

- * Support multiple modes of access
- * Enable an economically competitive freight transport system
- * Align fees and revenue with infrastructure investments
- * Adapt to market changes and technological advances
- * Provide sustainability co-benefits, such as air quality and greenhouse gas emissions reductions
- * Encourage stakeholder investment



MOBILITY

A comprehensive Green Necklace system
with multi-modal public access points
in proximity to attractions and activity centers



MOBILITY

Provision and management of
vessel berthing and vehicle parking
through efficient site planning,
strategic partnerships,
and technological advances

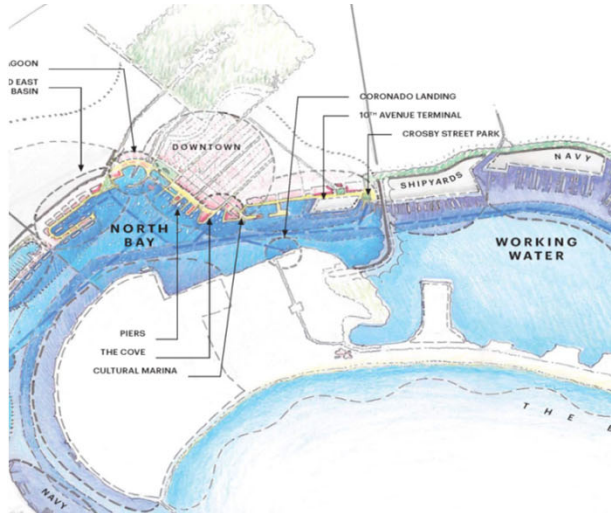


MOBILITY

Improved multi-modal connections
to the San Diego International Airport
and employment and commerce centers
on District Tidelands

Port Master Plan Update:

Goals for Economic Development Element



Goals

Goals for Economic Development Element



Attachment M to Agenda File No. 2017-0209

PORT MASTER PLAN UPDATE Economic Development Element

GOALS:

1. A financially sustainable Port that generates sufficient capacity to invest in and maintain the District's built and natural assets, and provide public services and security
2. Thriving and modern maritime operations with regional, state, and national significance
3. Priority land and water uses that contribute to the generation of commerce and sustained economic strength
4. A diversified and growing economy that creates jobs for Californians and is a home for innovation in existing and emerging water-dependent industries
5. Efficient deep-water marine and cruise terminals that optimize the movement of goods and passengers
6. A vibrant waterfront that is a destination for domestic and international tourism and recreational activities for the enjoyment of all people
7. Infrastructure, facilities, and partnerships strategically aligned with the District's mission

Unless otherwise denoted, the order of the goals and policies in the Port Master Plan have no legal effect and do not indicate a priority or preference.

Page 1 of 1



ECONOMIC DEVELOPMENT

A financially sustainable Port
that generates sufficient capacity
to invest in and maintain
the District's built and natural assets,
and provide public services and security



ECONOMIC DEVELOPMENT

Thriving and modern
maritime operations with
regional, state, and national significance



ECONOMIC DEVELOPMENT

Priority land and water uses
that contribute to
the generation of commerce and
sustained economic strength



ECONOMIC DEVELOPMENT

A diversified and growing economy
that creates jobs for Californians
and is a home for innovation in
existing and emerging water-dependent industries



ECONOMIC DEVELOPMENT

Efficient deep-water marine and cruise
terminals that optimize the movement of
goods and passengers



ECONOMIC DEVELOPMENT

A vibrant waterfront
that is a destination for
domestic and international tourism
and recreational activities
for the enjoyment of all people



ECONOMIC DEVELOPMENT

Infrastructure, facilities, and partnerships

strategically aligned

with the District's mission

AGENDA NO. 1
FILE NO. 2017-0209

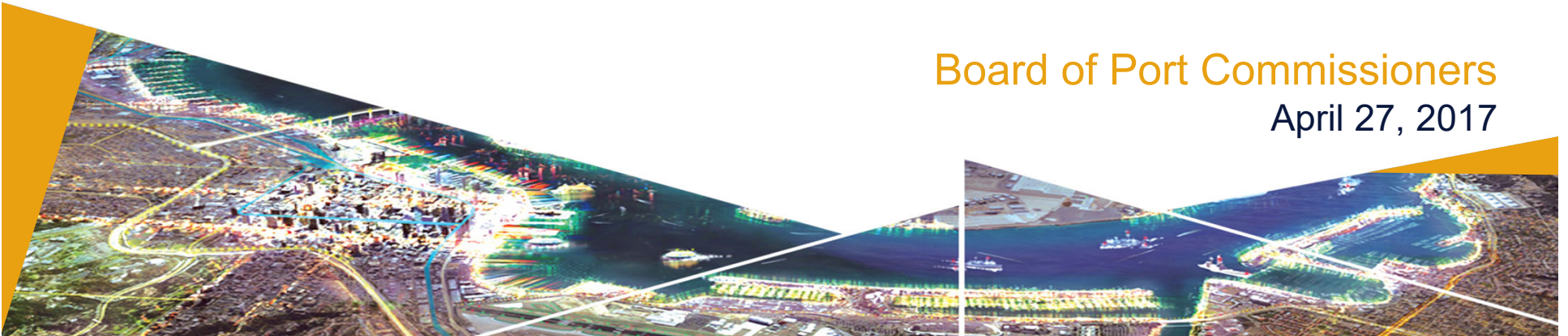
SPECIAL BOARD MEETING

**Integrated Planning
Port Master Plan Update**

**Workshop No. 2 Regarding the
Draft Port Master Plan Update**

Board of Port Commissioners
April 27, 2017

PLANNING & GREEN PORT



Port Master Plan Update:

Public
Comment
Period 1.A







MOBILITY

Efficient and convenient
land and water access
for the movement of people and goods
to and from neighboring jurisdictions
and throughout the District



MOBILITY

Flexible and coordinated mobility, parking, and wayfinding strategies that:

- * Support multiple modes of access
- * Enable an economically competitive freight transport system
- * Align fees and revenue with infrastructure investments
- * Adapt to market changes and technological advances
- * Provide sustainability co-benefits, such as air quality and greenhouse gas emissions reductions
- * Encourage stakeholder investment



MOBILITY

A comprehensive Green Necklace system
with multi-modal public access points
in proximity to attractions and activity centers



MOBILITY

Provision and management of
vessel berthing and vehicle parking
through efficient site planning,
strategic partnerships,
and technological advances



MOBILITY

Improved multi-modal connections
to the San Diego International Airport
and employment and commerce centers
on District Tidelands





ECONOMIC DEVELOPMENT

A financially sustainable Port
that generates sufficient capacity
to invest in and maintain
the District's built and natural assets,
and provide public services and security



ECONOMIC DEVELOPMENT

Thriving and modern
maritime operations with
regional, state, and national significance



ECONOMIC DEVELOPMENT

Priority land and water uses
that contribute to
the generation of commerce and
sustained economic strength



ECONOMIC DEVELOPMENT

A diversified and growing economy
that creates jobs for Californians
and is a home for innovation in
existing and emerging water-dependent industries



ECONOMIC DEVELOPMENT

Efficient deep-water marine and cruise
terminals that optimize the movement of
goods and passengers

The background of the slide features a faded aerial photograph of a harbor, likely San Diego, with ships and waterfront development. A large, semi-transparent blue number '6' is positioned on the right side of the slide, partially overlapping the 'ECONOMIC DEVELOPMENT' text.

ECONOMIC DEVELOPMENT

A vibrant waterfront
that is a destination for
domestic and international tourism
and recreational activities
for the enjoyment of all people



ECONOMIC DEVELOPMENT

Infrastructure, facilities, and partnerships

strategically aligned

with the District's mission



Port Master Plan Update:

Public Comment

Approximately 2:00pm

**1.B Goals and Land and Water
Use Map: Planning Districts**

SAN DIEGO UNIFIED PORT DISTRICT

REQUEST TO SPEAK <i>Submit completed form to staff prior to Chair announcing the agenda item.</i>		
Non Agenda Public Comment		
Agenda Item No. 1-B		
Date:		

In Favor	In Opposition	Neutral
Other (specify)		

PERSONAL INFORMATION:

The information requested below is voluntary.
Any information provided on this form is a public record and subject to disclosure under the California Public Records Act.

Name:
(Please Print)

Organization
or Affiliation:
(As applicable)

Title:

Address:

City/State/Zip:

Telephone Number: ()

Email:

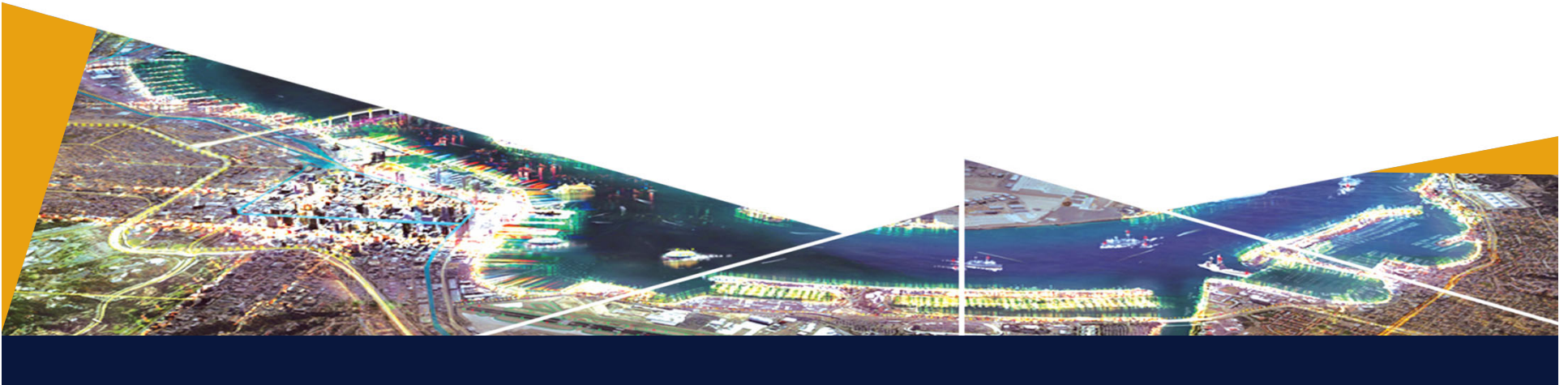
TIME LIMITS

Speaking time is limited. You will need to be brief and stay on subject. Written comments may be of any length and may be submitted to the District Clerk for inclusion in the record.

If you are **PAID** to influence the District, its employees, or its officials, you **MUST** disclose this to the District Clerk.



Lunch Break



Port Master Plan Update:

Public Comment

Approximately 2:00pm

**1.B Goals and Land and Water
Use Map: Planning Districts**

SAN DIEGO UNIFIED PORT DISTRICT

REQUEST TO SPEAK

Submit completed form to staff prior to Chair announcing the agenda item.

Non Agenda Public Comment		
Agenda Item No. 1-B		
Date: _____		

In Favor	In Opposition	Neutral
Other (specify) _____		

PERSONAL INFORMATION:

The information requested below is voluntary.
Any information provided on this form is a public record and subject to disclosure under the California Public Records Act.

Name: _____
(Please Print)

Organization or Affiliation: _____
(As applicable)

Title: _____

Address: _____

City/State/Zip: _____

Telephone Number: () _____

Email: _____

TIME LIMITS

Speaking time is limited. You will need to be brief and stay on subject. Written comments may be of any length and may be submitted to the District Clerk for inclusion in the record.

If you are **PAID** to influence the District, its employees, or its operations, you **MUST** disclose this to the District Clerk.



PROJECTS







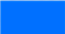
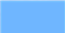




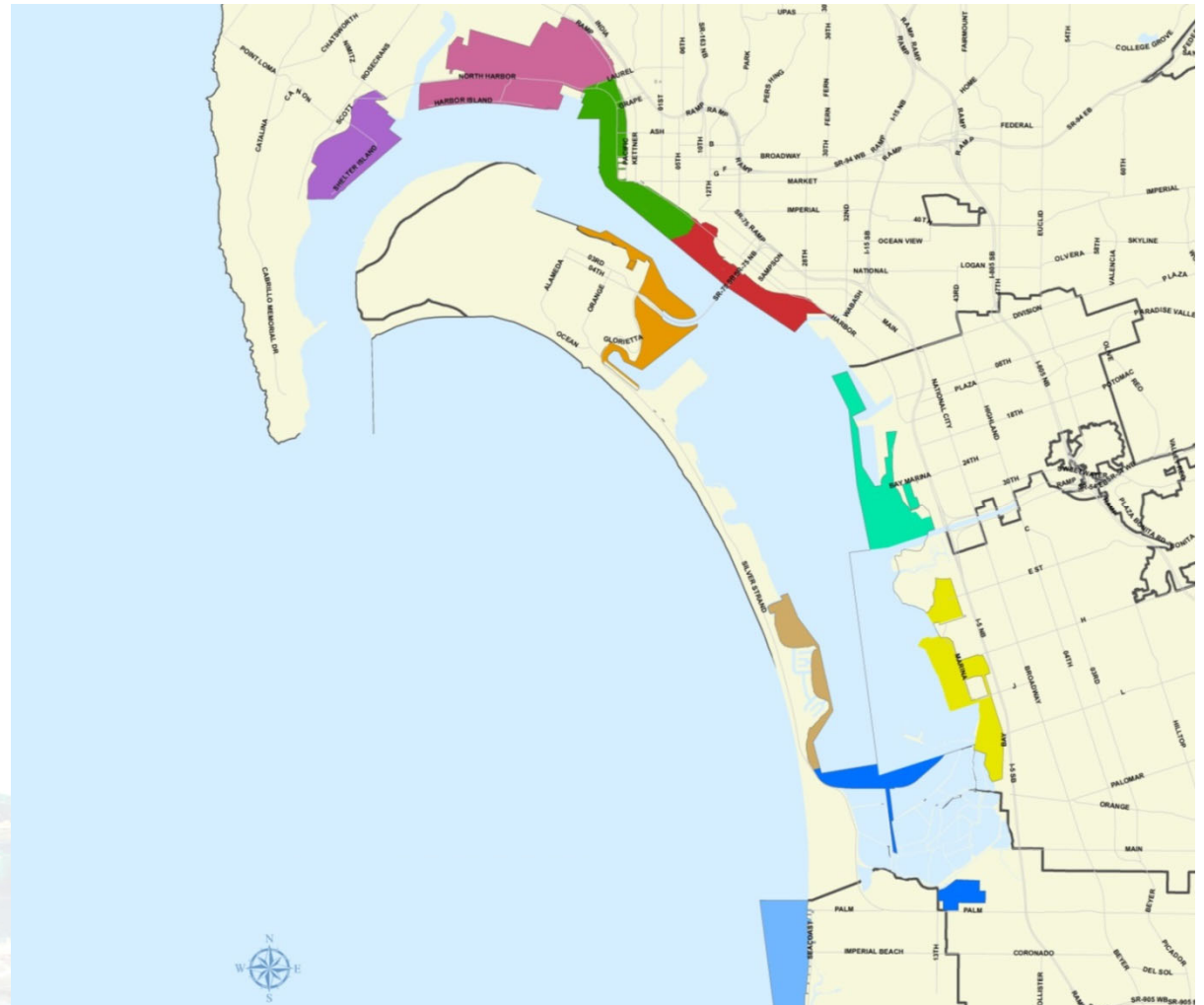
GOALS

Planning Districts

Legend

Proposed Planning Districts

-  District 1 - SHELTER ISLAND
-  District 2 - HARBOR ISLAND
-  District 3 - EMBARCADERO
-  District 4 - WORKING WATERFRONT
-  District 5 - NATIONAL CITY BAYFRONT
-  District 6 - CHULA VISTA BAYFRONT
-  District 7 - SOUTH BAY
-  District 8 - IMPERIAL BEACH OCEANFRONT
-  District 9 - SILVER STRAND
-  District 10 - CORONADO BAYFRONT





Port Master Plan Update: Tiered Baywide Goals & Policies Approach

Baywide Goals

Baywide Policies

**Planning District Policies
& Policies**

Port Master Plan Update: Tiered Baywide Goals & Policies Approach

Baywide Goal

A comprehensive Green Necklace system with multi-modal public access points in proximity to attractions and activity centers

SAMPLE LANGUAGE

Baywide Policy

Establish a system of connected accessways and multi-modal facilities

Planning District Policy – Working Waterfront

Coordinate with agencies with transportation authority to plan and improve bicycle access facilities

Planning District Policy – Shelter Island

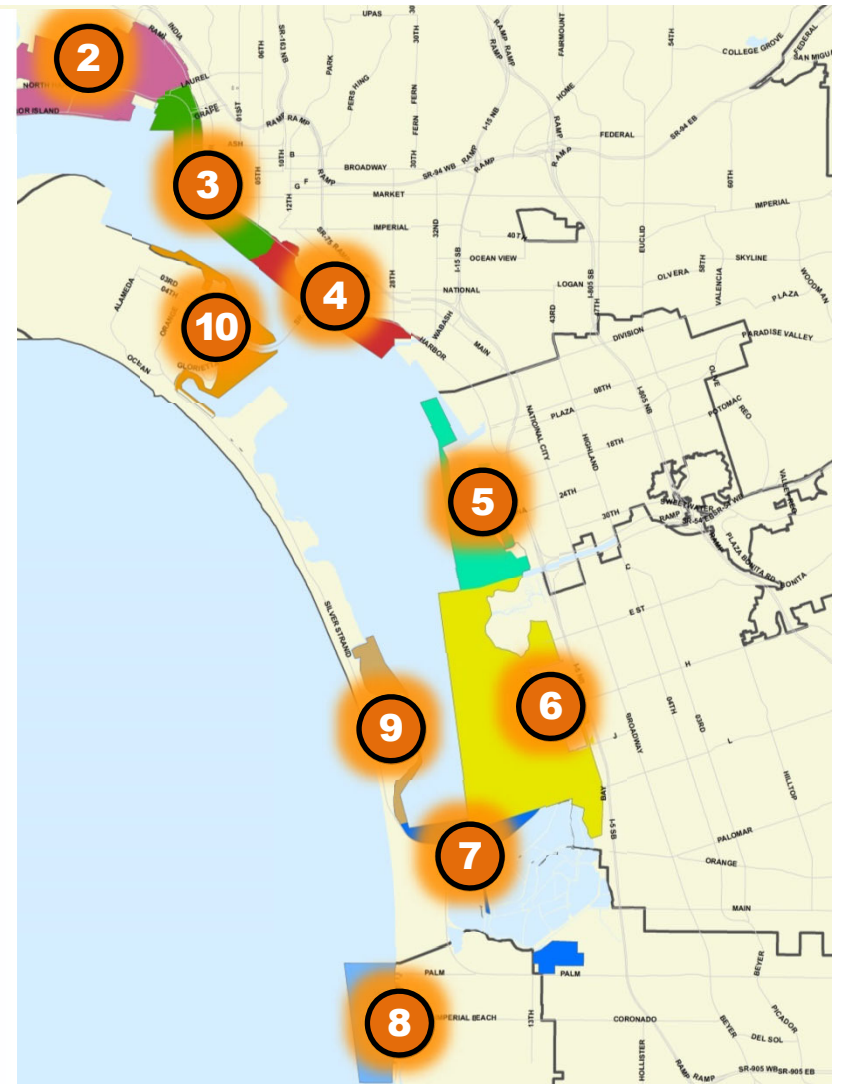
Provide a continuous Promenade section along the waterfront



Port Master Plan Update:

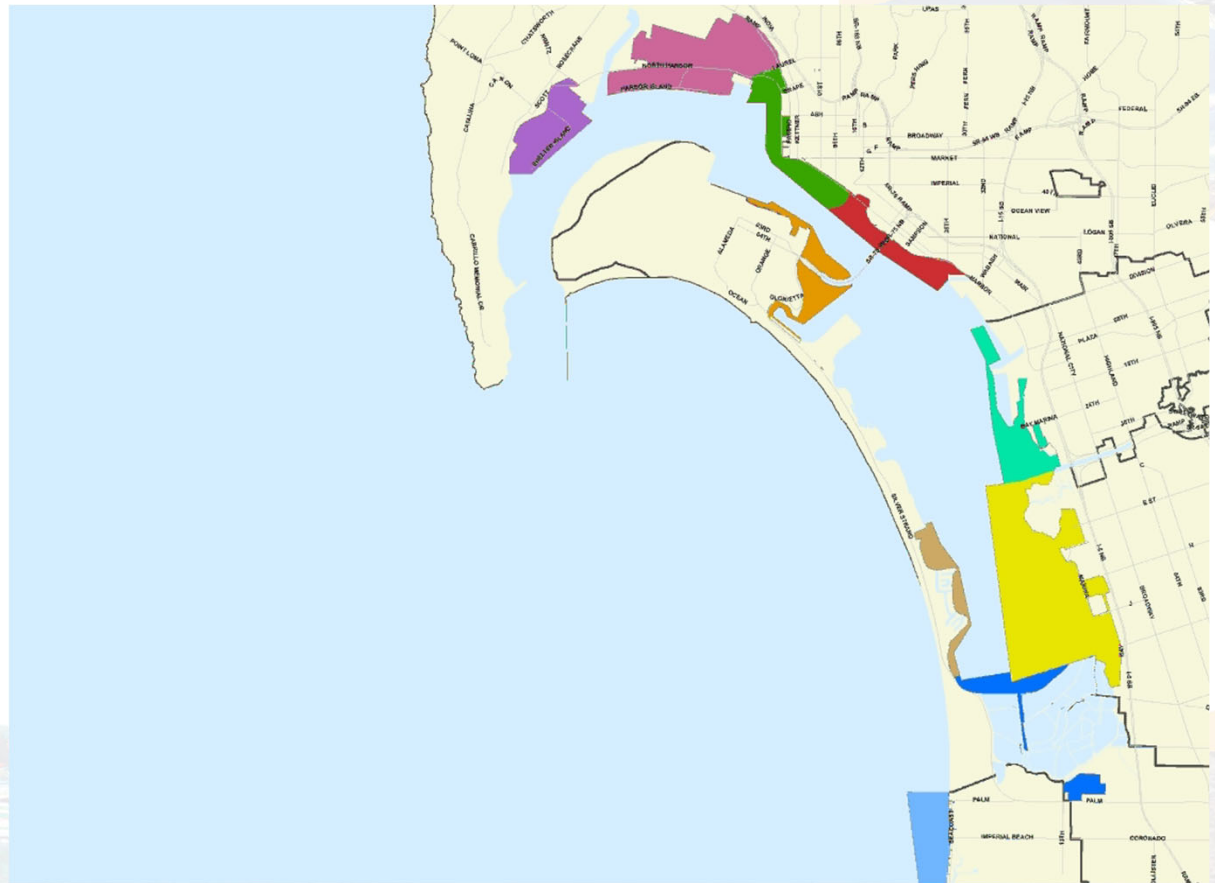
Planning Districts

- Planning District 10: Coronado Bayfront
- Planning District 9: Silver Strand
- Planning District 8: Imperial Beach Oceanfront
- Planning District 7: South Bay
- Planning District 6: Chula Vista Bayfront
- Planning District 5: National City Bayfront
- Planning District 4: Working Waterfront
- Planning District 3: Embarcadero
- Planning District 2: Harbor Island
- Planning District 1: Shelter Island



Goals

Planning District 10: Coronado Bayfront





Planning District

Celebrated recreational open space areas, Bayfront access, water-based activities, and visitor amenities that encourage a variety of ways for people to enjoy the Coronado Bayfront



Planning District



Enhanced physical and visual connections
from the City of Coronado, to District
Tidelands and the water



Planning District

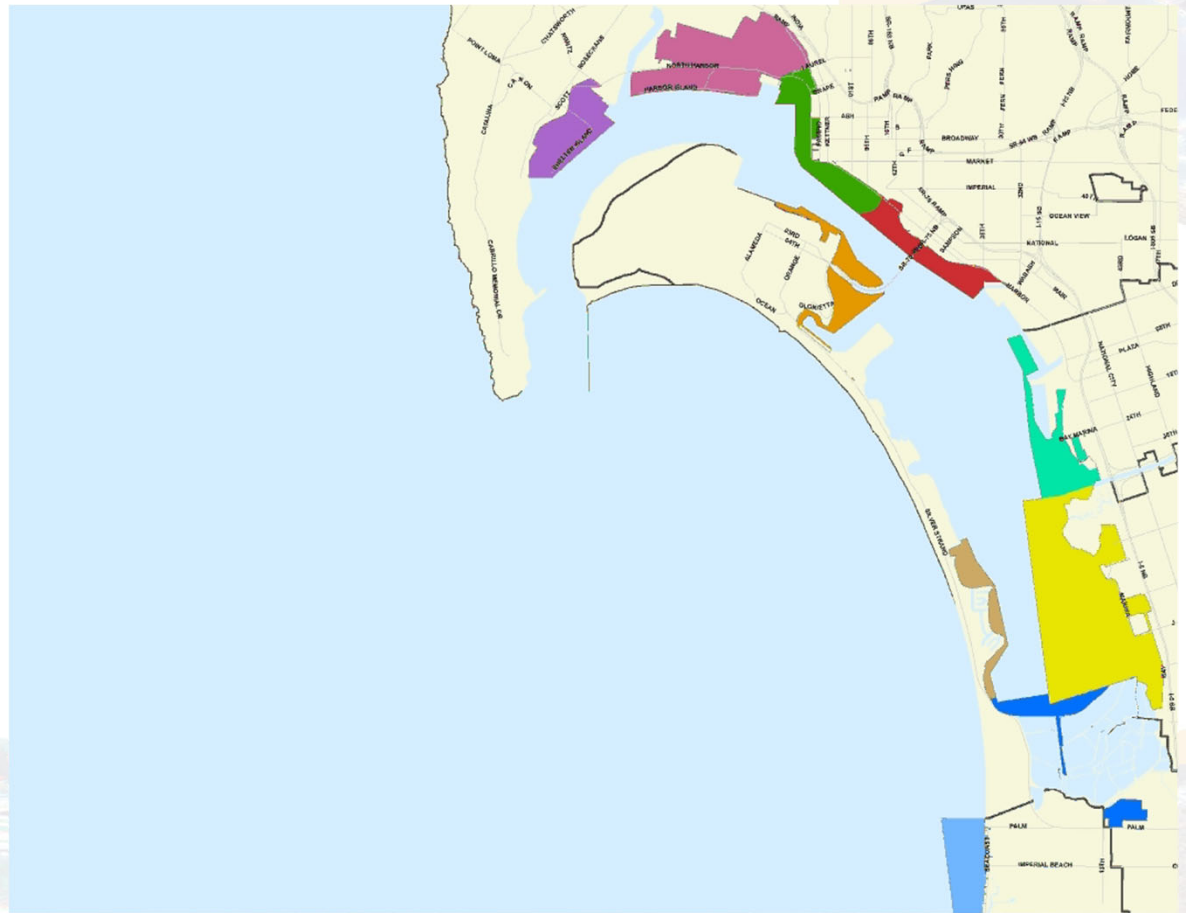
New and expanded Visitor-Serving
Recreation Commercial development that
provides for long-term economic vitality



Land and Water Use: Planning District 10: Coronado Bayfront

Goals

Planning District 9: Silver Strand





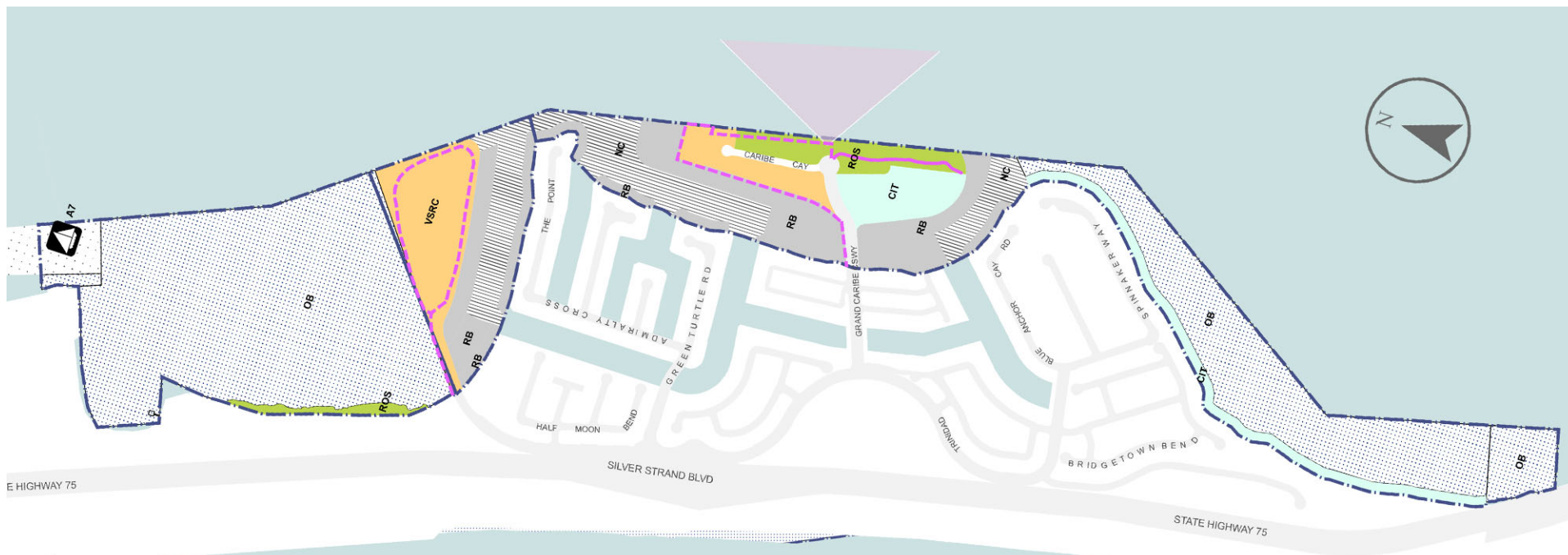
Planning District

Context sensitive shoreline spaces, land and water connections, economic development, and Open Bay areas that provide for the enjoyment of the Bay and water-based recreational activities by all people



Planning District

Enhanced wayfinding and convenient connections between District Tideland, the Bayshore Bikeway, and Silver Strand State Beach



- District Boundary
- Boat Anchorage Locations
- Scenic Vista Area
- Existing Promenade
- Proposed Promenade

Commercial - Land Use

Visitor-Serving Recreation Commercial (VSRC)

Commercial - Water Use

Recreational Berthing (RB)

Public Recreation - Land Use

Recreation Open Space (ROS)

Conservation - Water Use

Conservation/Inter-tidal (CIT)

Public Recreation - Water Use

Open Bay (OB)

Institutional - Water Use

Anchorage (A)

Navigation Corridor (NC)

Land and Water Use: Planning District 9: Silver Strand

Planning District 8: Imperial Beach Oceanfront





Planning District

Expanded Visitor Serving Recreation
Commercial development, amenities, and
services that support visitors and provide for
a variety of recreational activities



Planning District

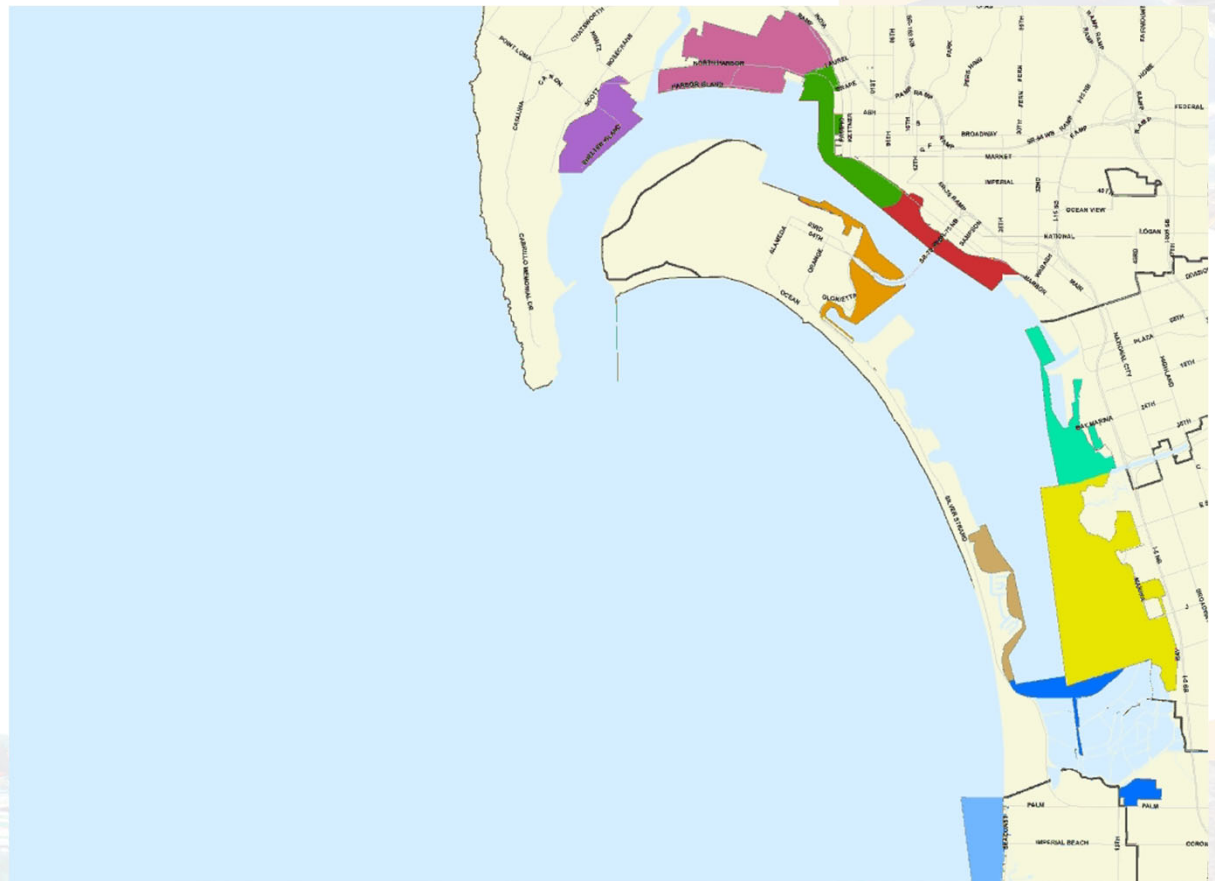
Continued safe public access and use
of the pier and open water

Land and Water Use: Planning District 8: Imperial Beach Oceanfront



Goals

Planning District 7: South Bay





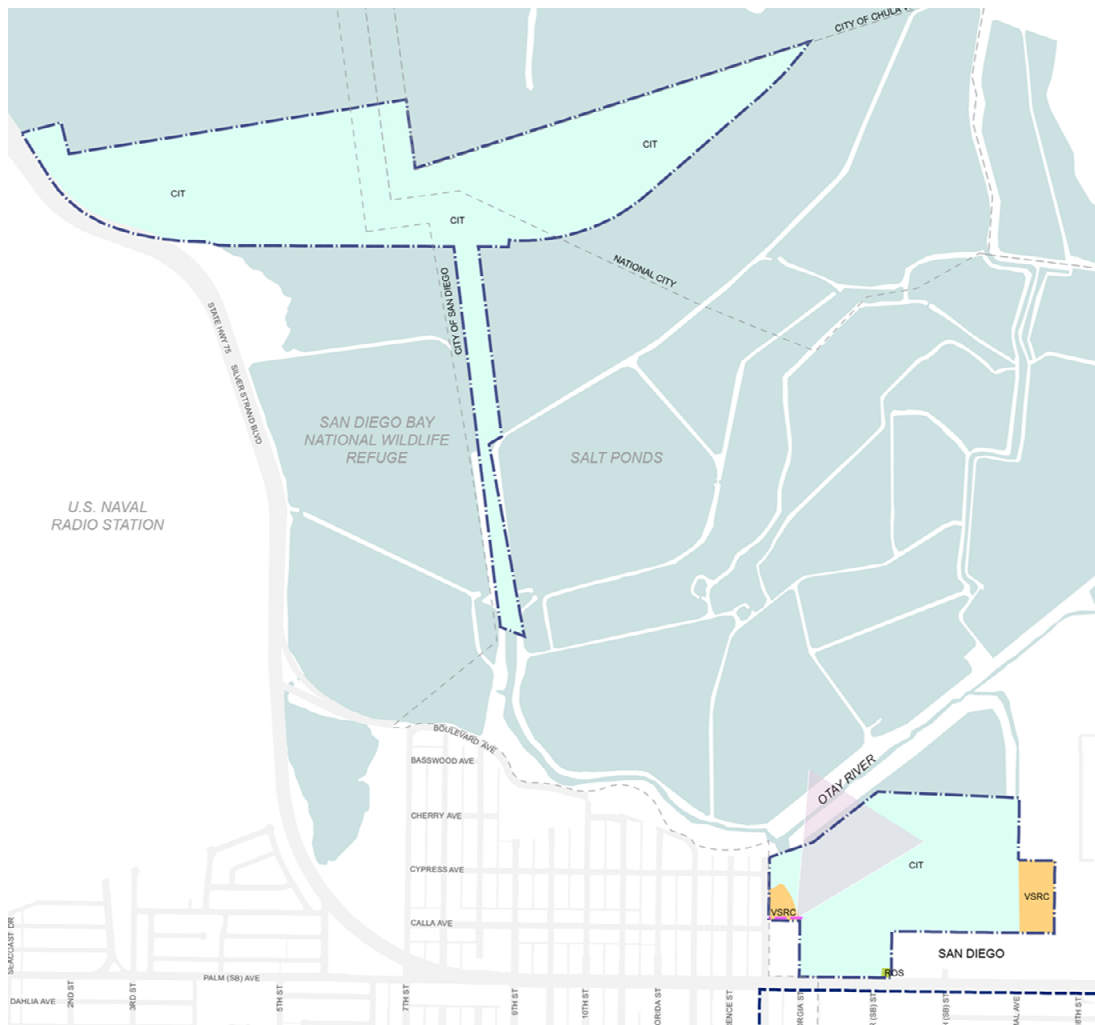
Planning District

Conservation and management efforts
that contribute to the overall marine and
biological health of south San Diego Bay



Planning District

Expanded opportunities for lower-scale, lower-cost Visitor Serving Recreation Commercial and Recreation Open Space uses along the Bay

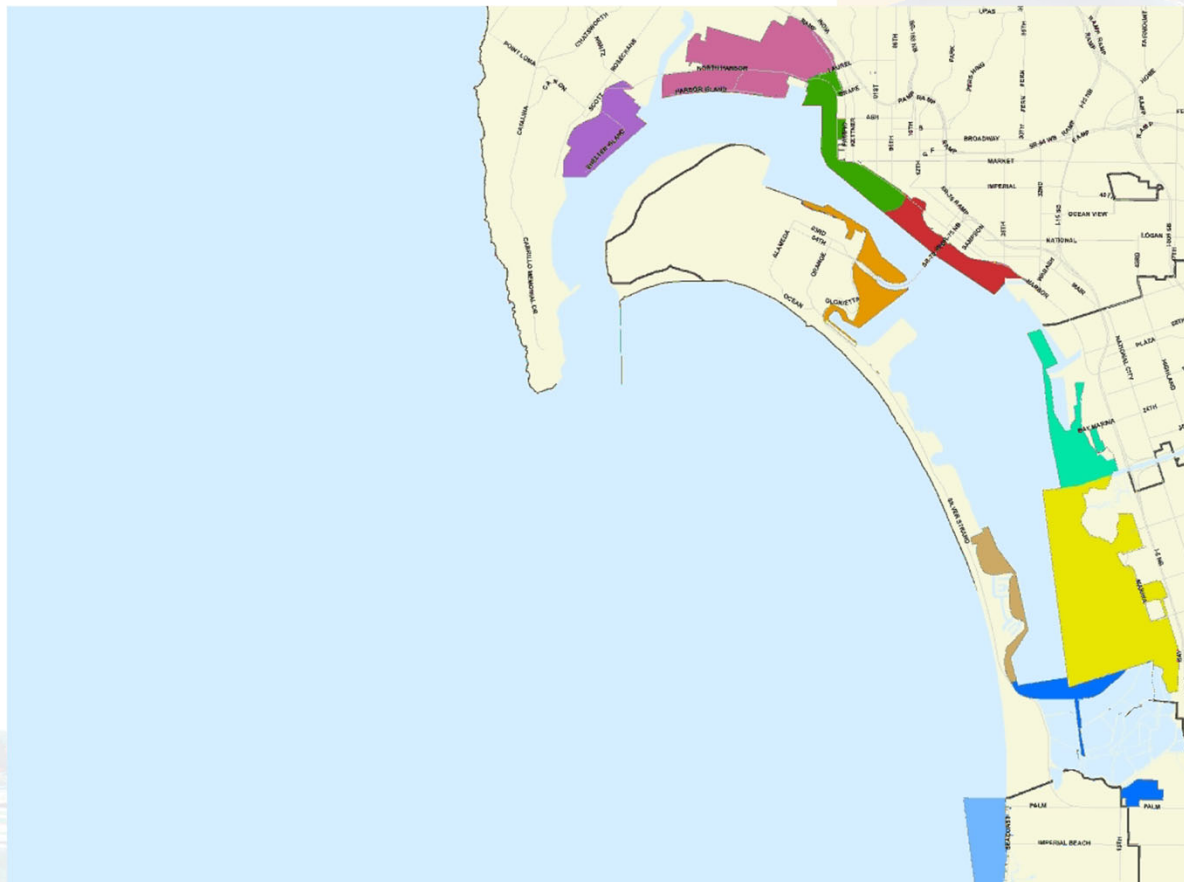


Land and Water Use: Planning District 7: South Bay

- District Boundary
- Coastal Zone Boundary
- Scenic Vista Area
- Proposed Promenade
- Commercial - Land Use**
 - Visitor-Serving Recreation Commercial (VSRC)
- Public Recreation - Land Use**
 - Recreation Open Space (ROS)
- Conservation - Water Use**
 - Conservation/Inter-tidal (CIT)

Goals

Planning District 6: Chula Vista Bayfront





Planning District

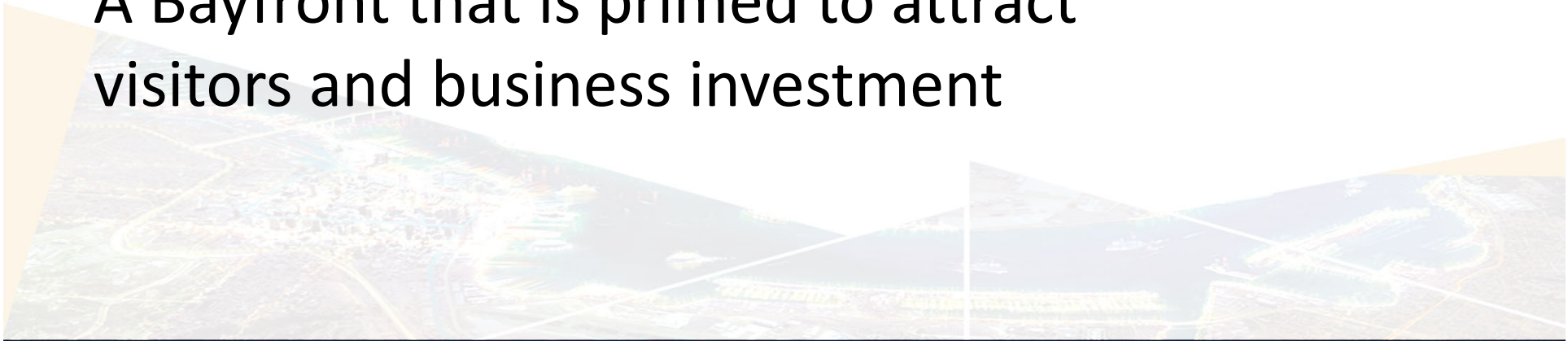
Coordinated economic development activities, natural resources management, and public access improvements that provide jobs along the waterfront and connect more people to the Bay consistent with the Chula Vista Bayfront Master Plan

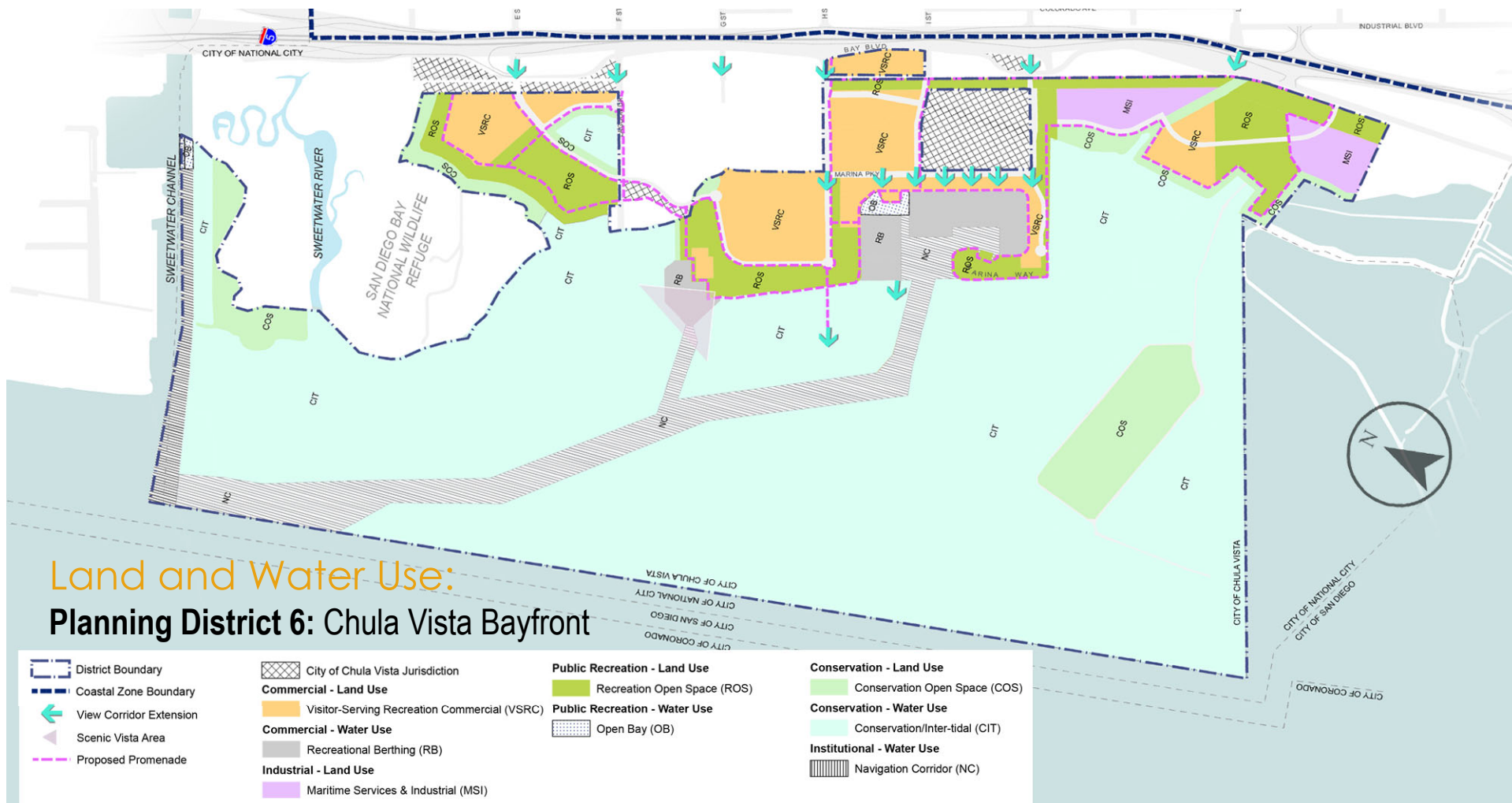


Planning District



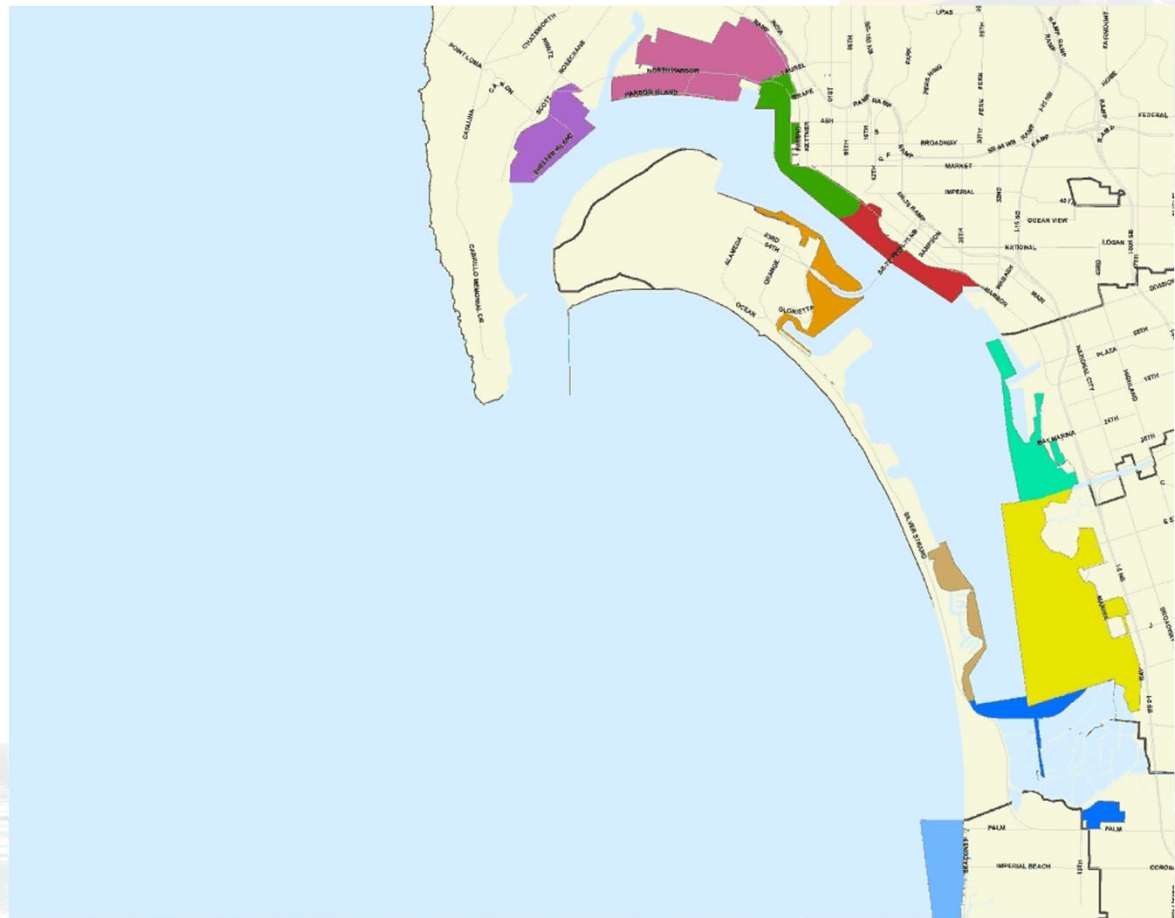
A Bayfront that is primed to attract
visitors and business investment





Goals

Planning District 5: National City Bayfront





Planning District



A modernized marine terminal facility that is a vital, global gateway for imports and exports



Planning District



Protected viable marine industrial activities
and deep-water berthing that are competitive
and flexible in meeting market demand



Planning District

5

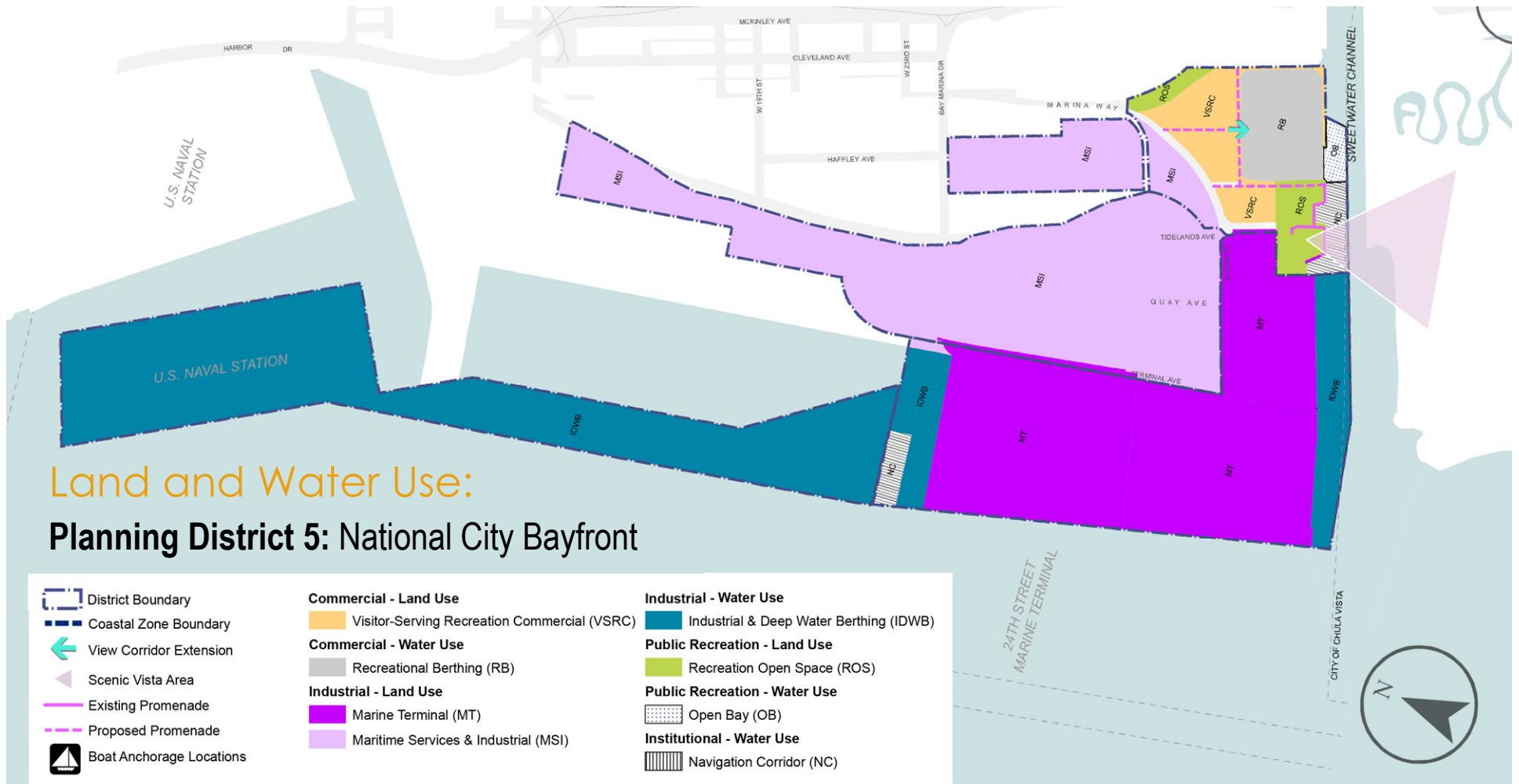
Coordinated land uses that provide
quality wage jobs for the region



Planning District

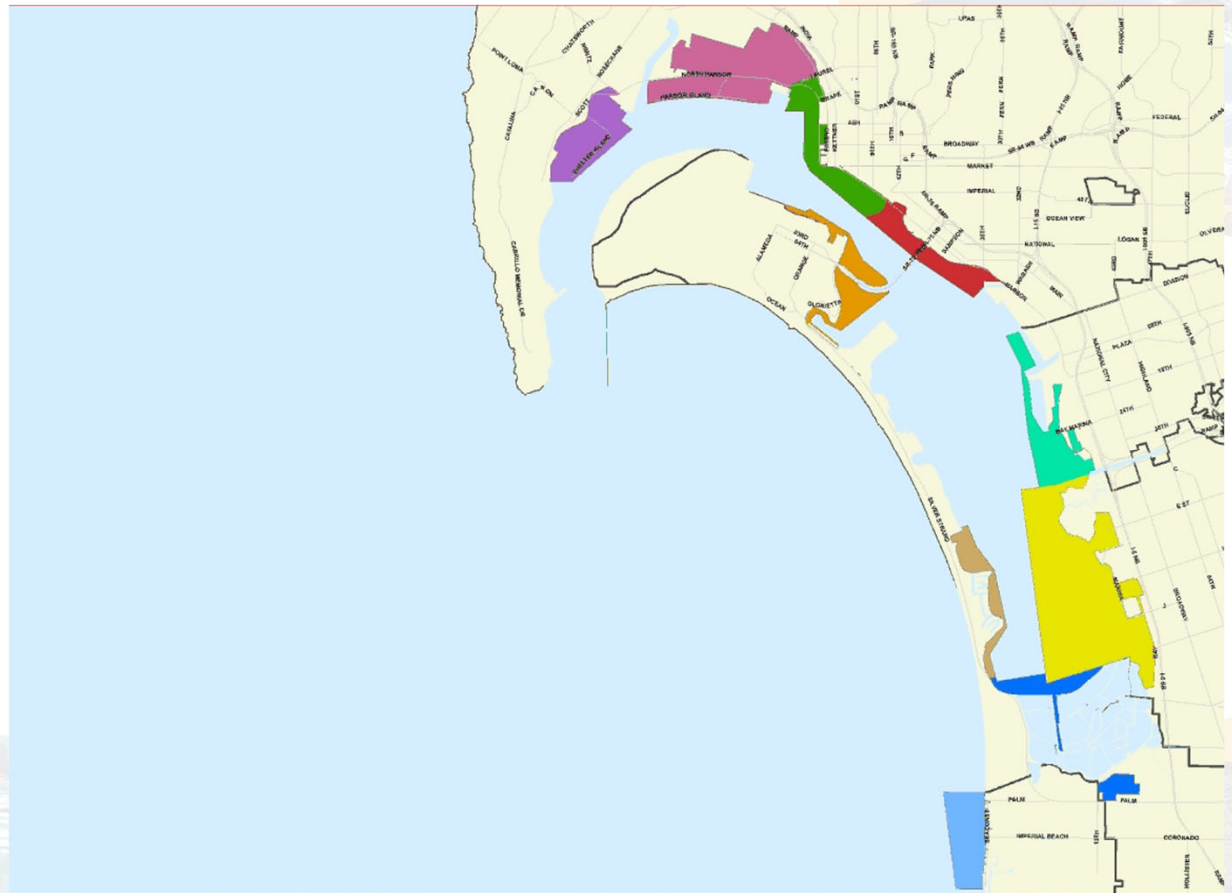


Activated and safe access to identified public coastal access opportunities that offer people a variety of recreational activities



Goals

Planning District 4: Working Waterfront





Planning District



A modernized marine terminal facility located at Tenth Avenue that optimizes the terminal as a vital, global gateway for imports and exports, while remaining flexible and responsive to future market conditions



Planning District



Upgraded facilities and a competitive and sustainable freight movement system that handles cargo in an efficient, safe, and environmentally responsible way



Planning District



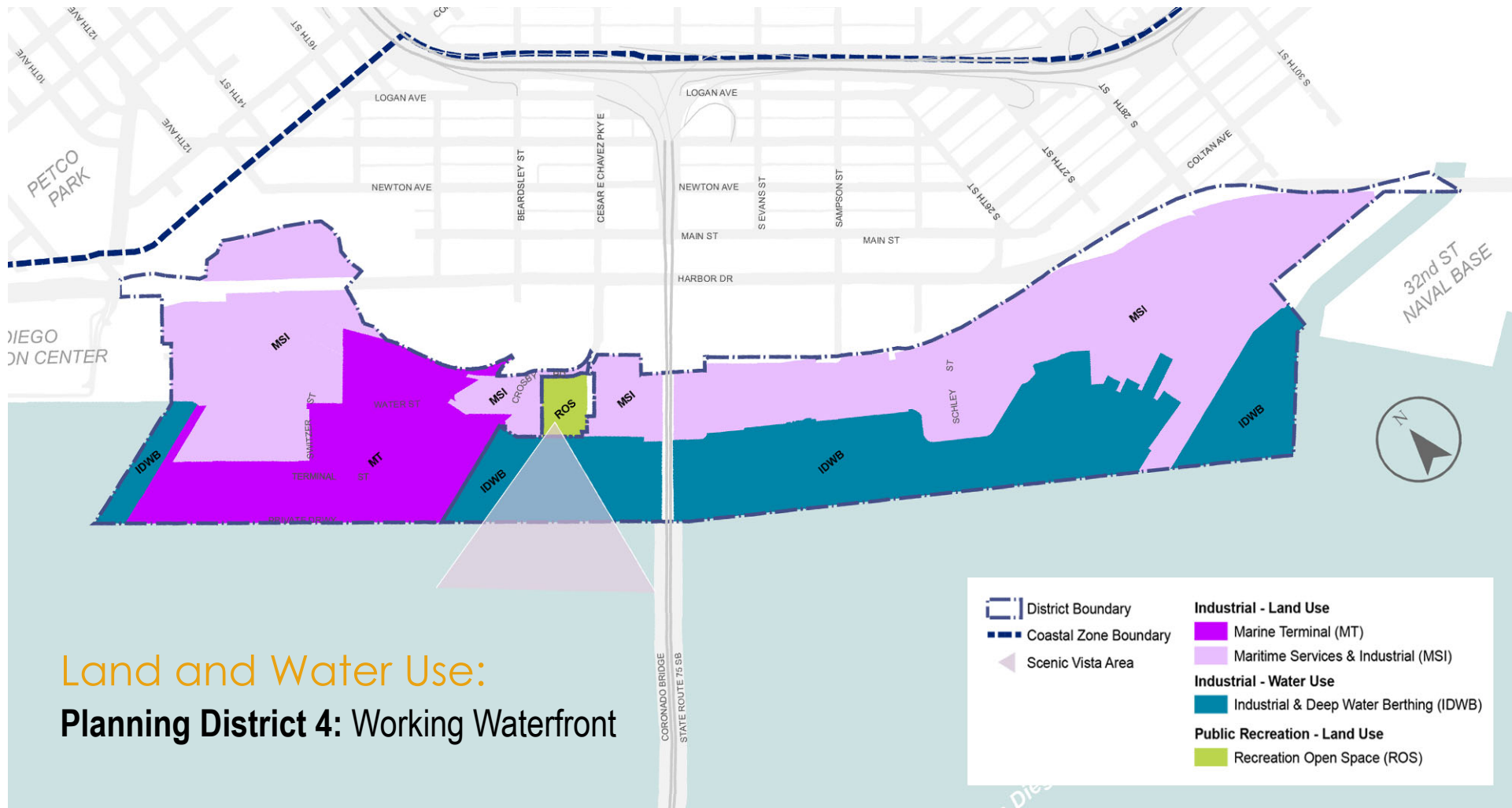
Convenient and safe access to jobs and
identified public coastal access opportunities
within the Working Waterfront



Planning District

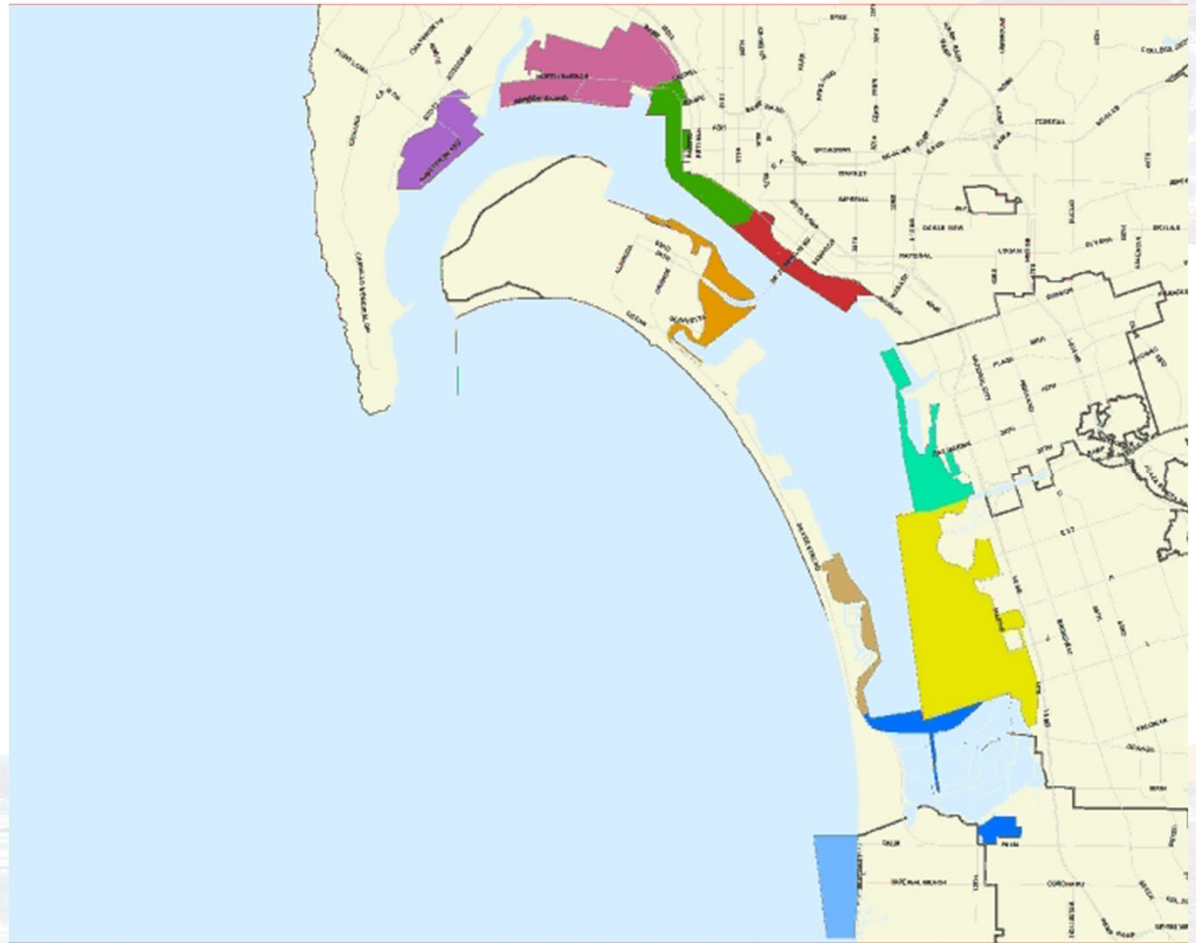


A premier and high-performing center for
shipbuilding and ship repair for the defense
and maritime industry



Goals

Planning District 3: Embarcadero





Planning District

A 'front door' to San Diego for travelers arriving by sea, land, or air, offering a vibrant mix of marine-oriented uses and visitor-serving activities, attractions, and recreation open space that showcase and celebrate the history of San Diego's waterfront



Planning District

Celebrated water areas that support historic ship, ferry and excursion vessel, recreational vessel, and commercial fishing berthing, and that preserve deep-water dependent cruise ship berthing



Planning District

An active waterfront experience that provides people access to a broad mix of land and water-based entertainment, recreation, hospitality, and visitor destinations along the Green Necklace

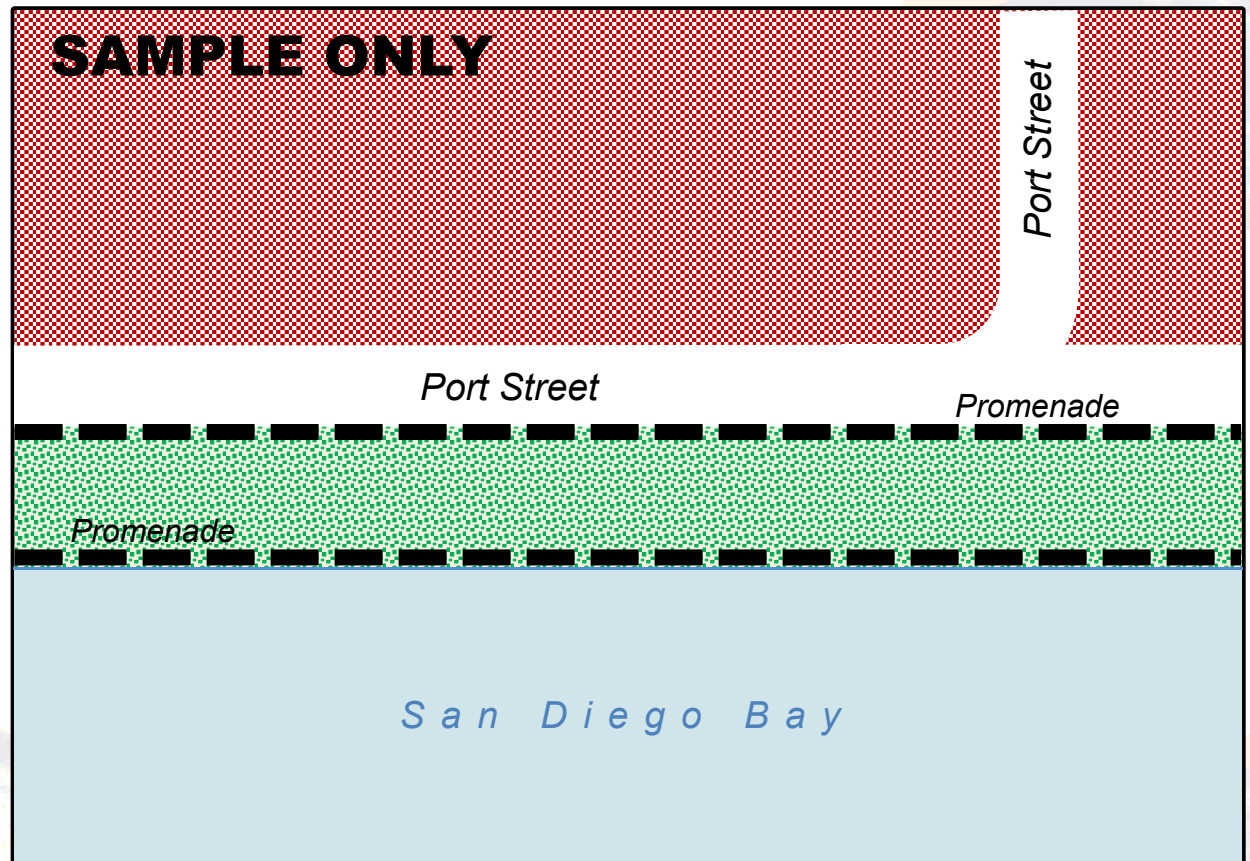
Port Master Plan Update:

Mixed-Use Overlay

 Commercial Recreation

 Park/Plaza

 Promenade



Traditional Arrangement

Port Master Plan Update:

Mixed-Use Overlay

 Mixed-Use Overlay

SAMPLE ONLY

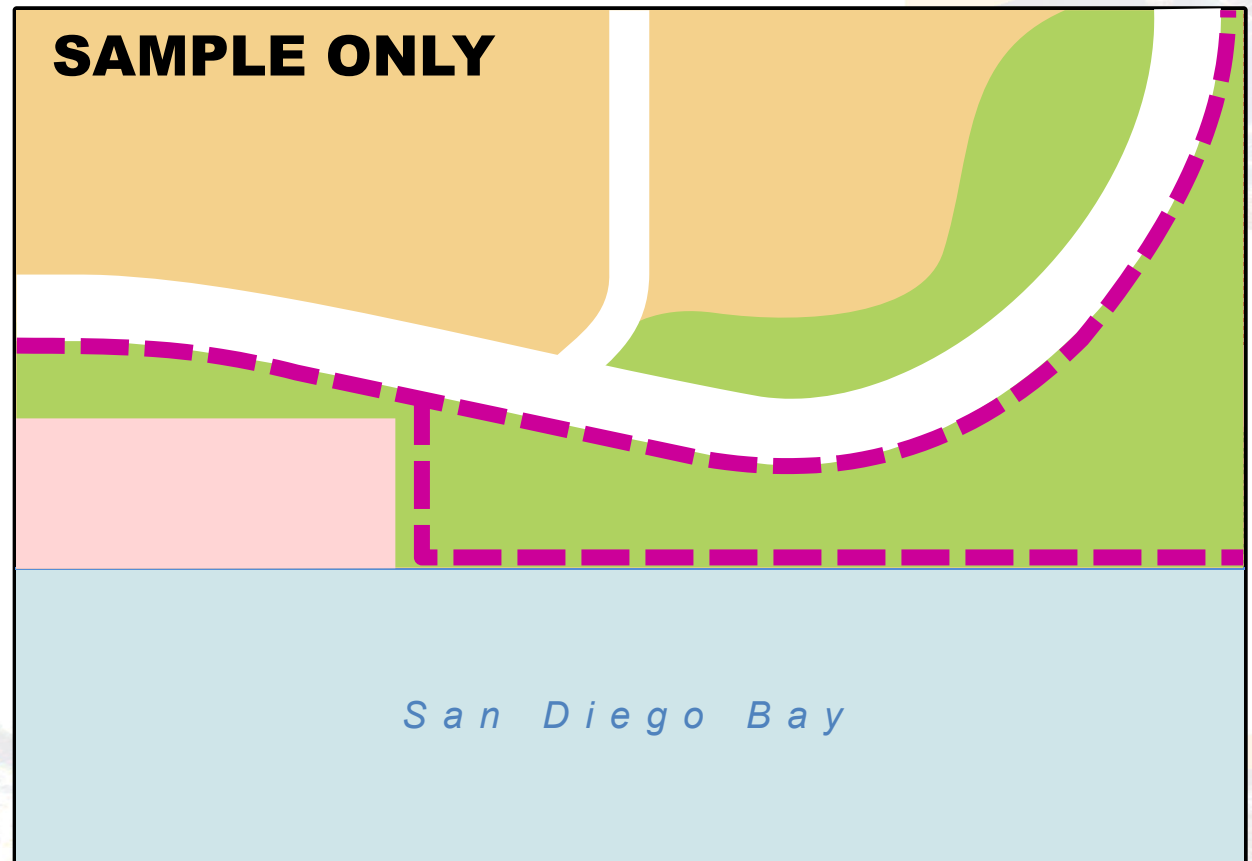
San Diego Bay

Mixed-Use Overlay

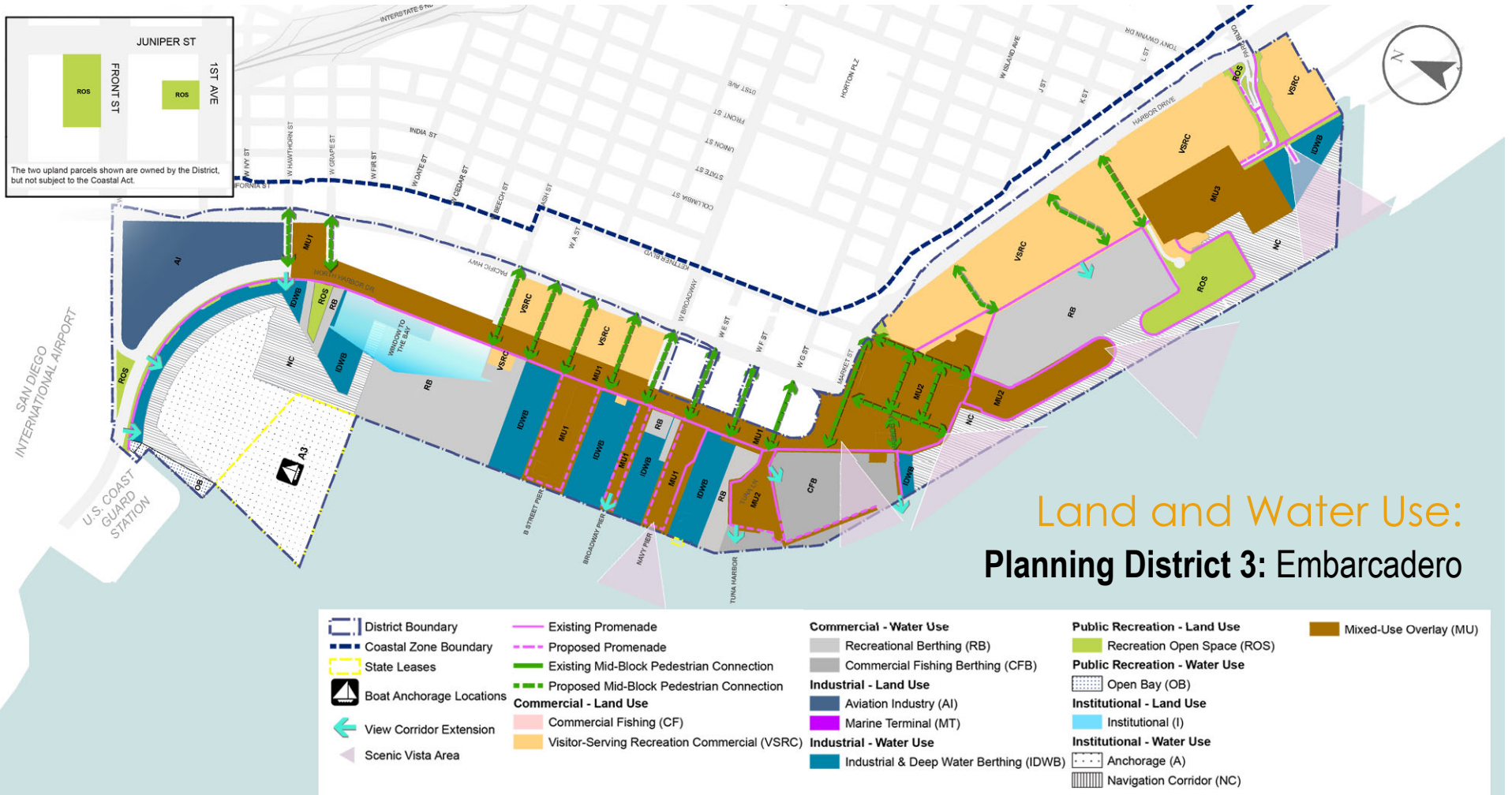
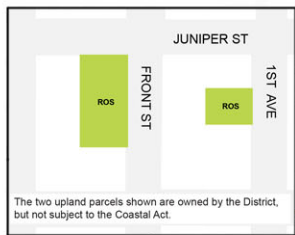
Port Master Plan Update:

Mixed-Use Overlay

-  Visitor-Serving Recreation Commercial
-  Commercial Fishing
-  Recreational Open Space
-  Proposed Promenade

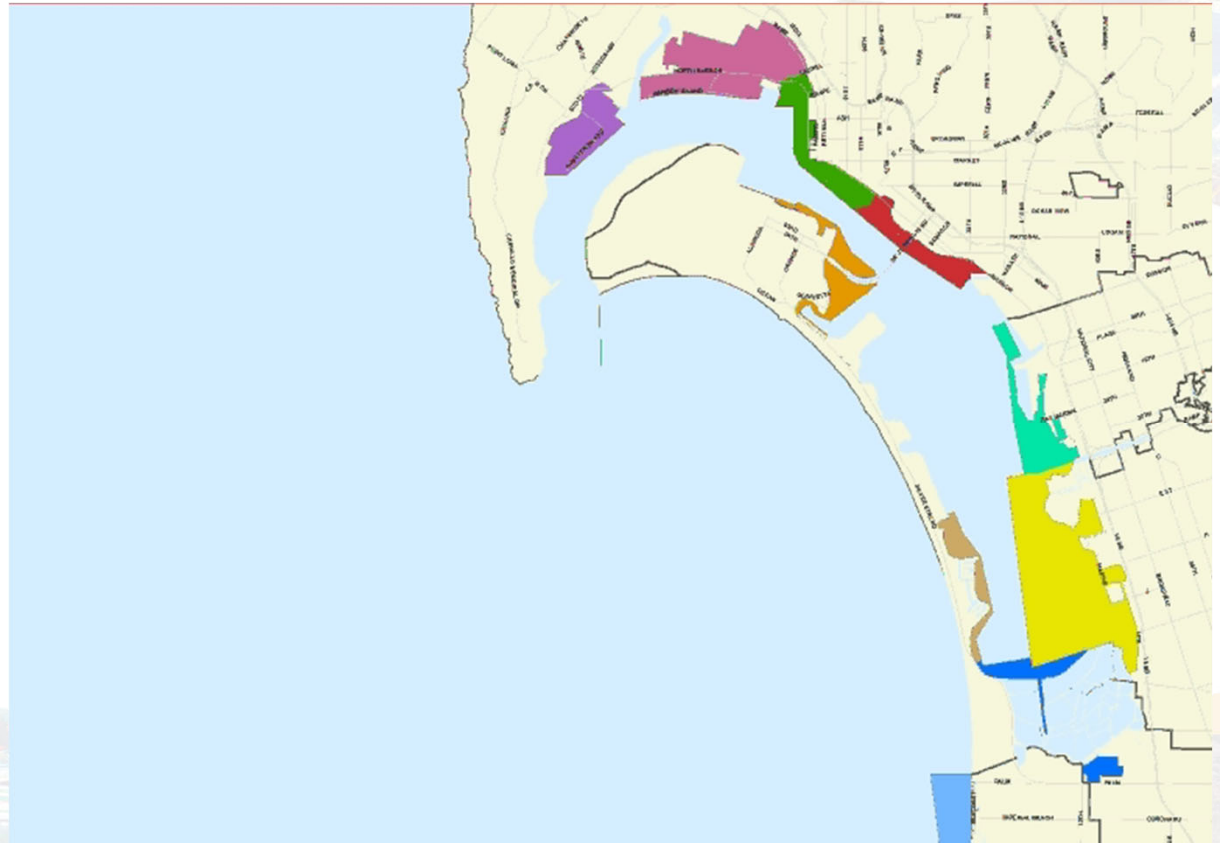


Flexibility in Arrangement



Goals

Planning District 2: Harbor Island





Planning District



An entry gateway that highlights the unique visitor-serving, public access, and recreational opportunities available throughout District Tidelands



Planning District

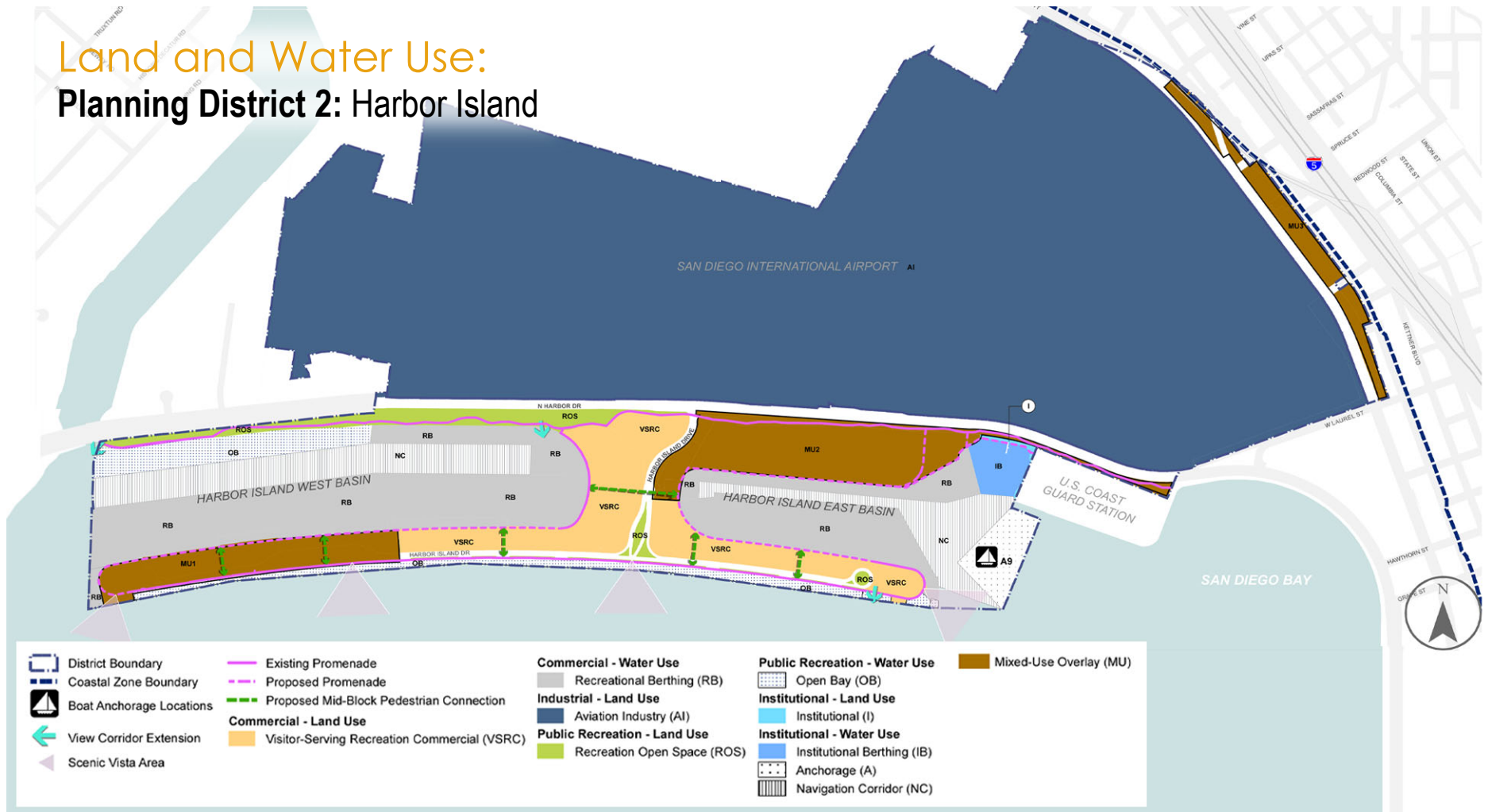
A Planning District that is primed to attract
business investment focused on Visitor Serving
Recreation Commercial development



Planning District

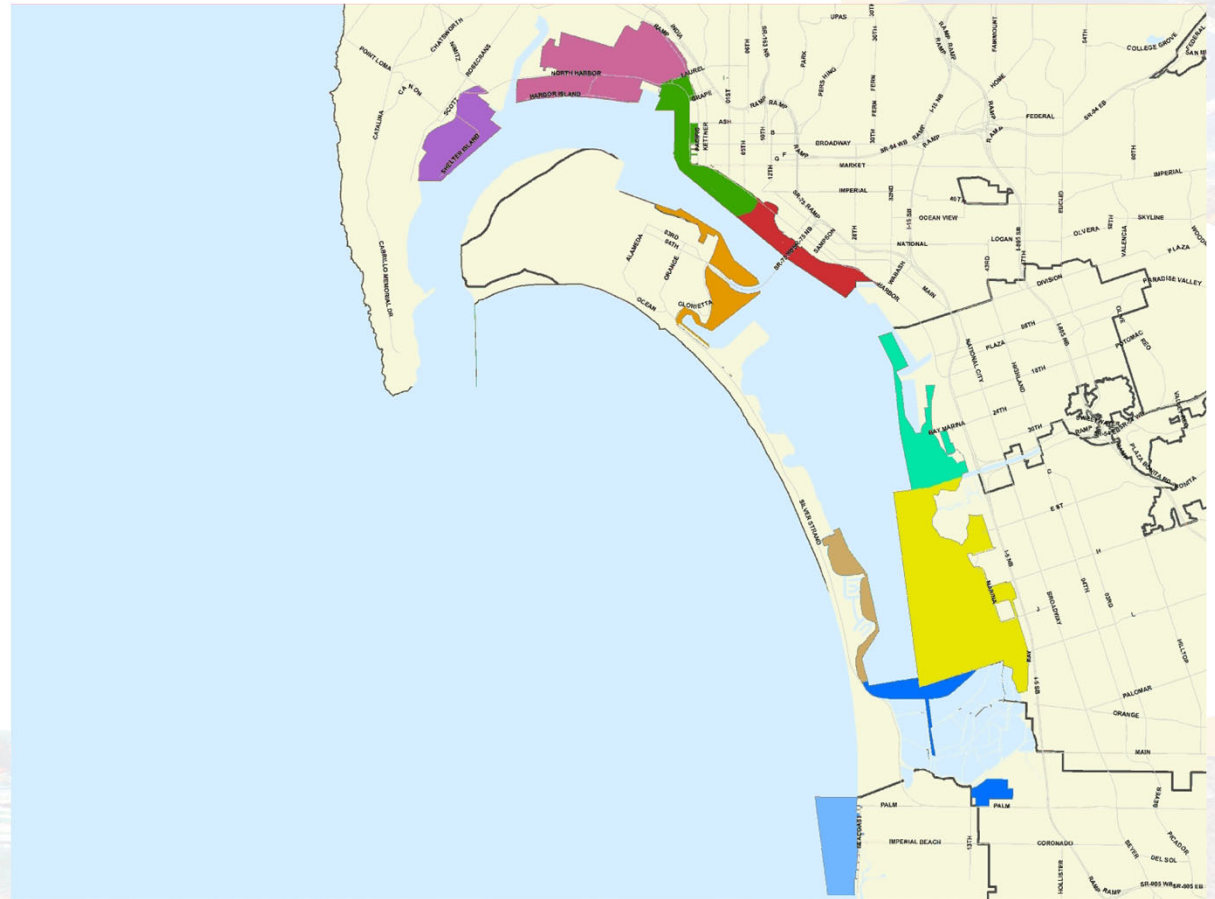
Mobility improvements that capitalize on the Planning District's proximity to the Airport, downtown San Diego, and regional transportation systems

Land and Water Use: Planning District 2: Harbor Island



Goals

Planning District 1: Shelter Island





Planning District

Strong water-dependent marine services and commercial fishing industries that provide for long-term economic viability and growth



Planning District

A vibrant waterfront that provides direct shoreline access and a variety of land- and water-based development and recreation activities that attract visitors and business investment on Shelter Island



Planning District

Enhanced public access, mobility, and wayfinding solutions that increase convenient and safe access to, from, and throughout Shelter Island



AGENDA NO. 1
FILE NO. 2017-0209

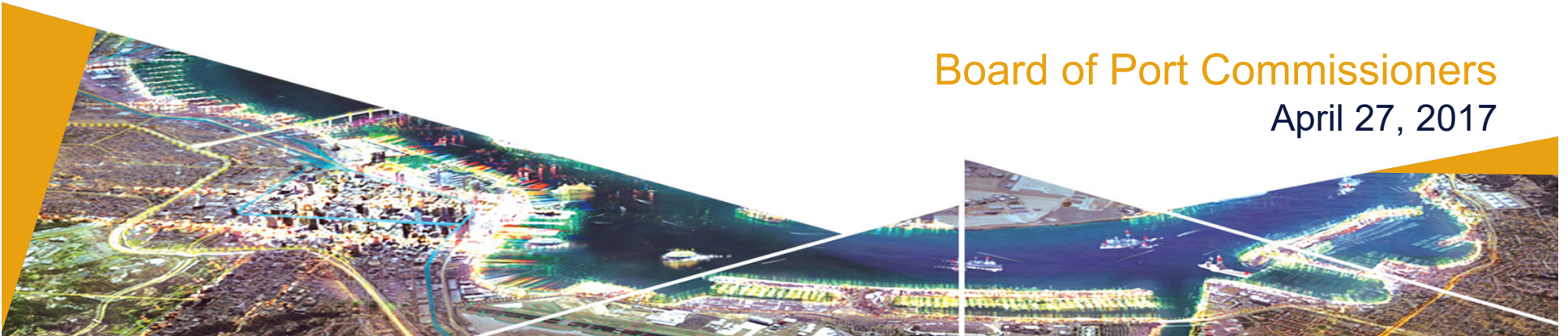
SPECIAL BOARD MEETING

**Integrated Planning
Port Master Plan Update**

**Workshop No. 2 Regarding the
Draft Port Master Plan Update**

Board of Port Commissioners
April 27, 2017

PLANNING & GREEN PORT



Port Master Plan Update:

Public
Comment
Period 1.B





AGENDA NO. 1
FILE NO. 2017-0209

SPECIAL BOARD MEETING

**Integrated Planning
Port Master Plan Update**

**Workshop No. 2 Regarding the
Draft Port Master Plan Update**

Board of Port Commissioners
April 27, 2017

PLANNING & GREEN PORT

