

Port of San Diego

Port Master Plan Update

Lesley Nishihira
Director, Planning

Wednesday June 12, 2019

Discussion Draft Community Discussion Series



Port of San Diego

What is the Port of San Diego?



PORTof
SAN DIEGO
Waterfront of Opportunity

Port of San Diego Jurisdiction

34

miles of waterfront

2,403

acres of land

3,535

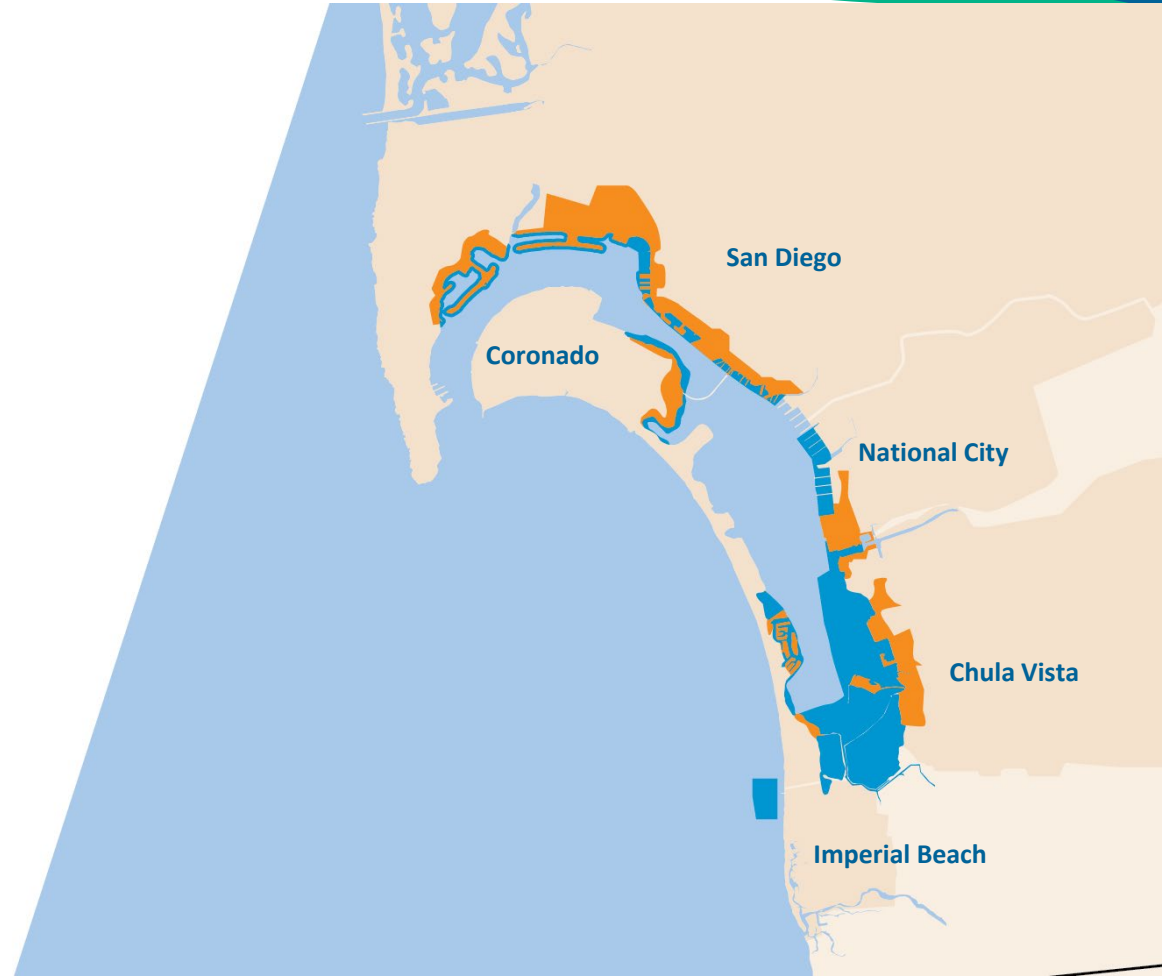
acres of water



Port Tidelands



Submerged Tidelands



Legislative Framework

Port Act

San Diego Unified
Port District Act
(1962)

Public Trust

Common Law
Doctrine of the
Public Trust

Coastal Act

California
Coastal Act
(1976)

The Port Act and Tidelands Trust Doctrine



Details responsibility on behalf of the people of the State of California



Manage San Diego Bay and the Waterfront 'Tidelands'



Promote commerce, navigation, recreation and fisheries



Port Tideland & Public Coastal Access



Economic Engine

More than \$1.7 Billion Invested Since 1963



- Two Maritime Cargo Terminals
- B Street Cruise Ship Terminal
- Port Pavilion on Broadway Pier
- Expansion of NC Marine Terminal Wharf



- SD Convention Center & Expansion
- Airport Terminals and Expansions
- Shelter Island
- Harbor Island



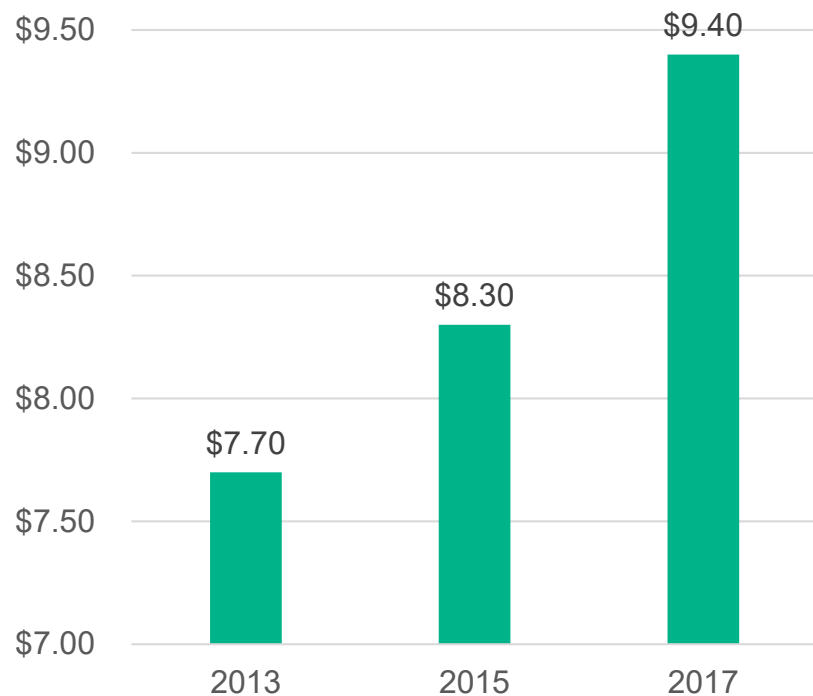
- South Bay Wildlife Refuge
- Wildlife and Habitat Preservation



- 22 Dedicated Public Parks
- National City Marina Basin
- North Embarcadero Visionary Plan Phase I

Overall Economic Impact

(in billions)

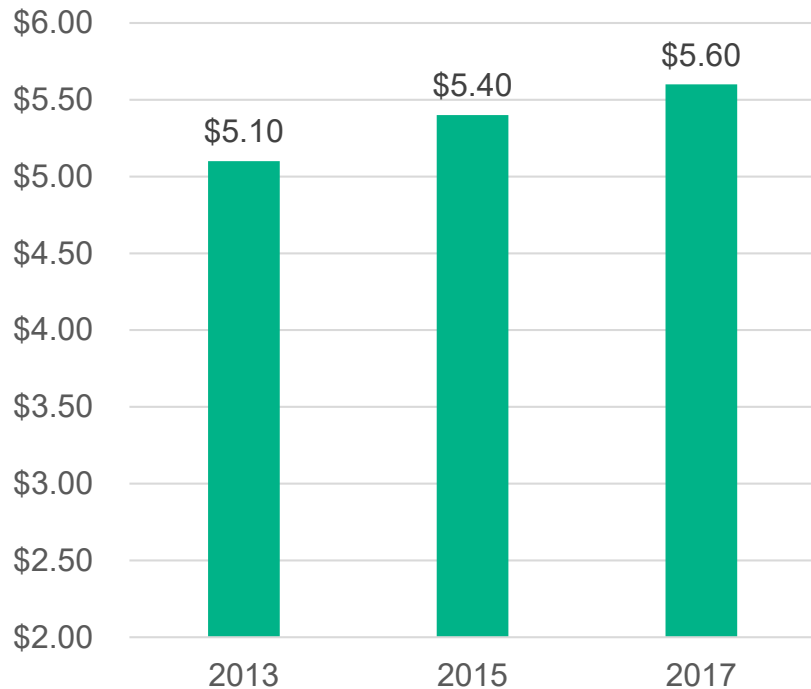


\$9.4
BILLION

13% increase
from 2015 to 2017

Direct Economic Impact

(in billions)



Port of San Diego Port Master Plan



PORTof
SAN DIEGO
Waterfront of Opportunity

Why do we need a Port Master Plan?

The Port Master Plan protects and promotes coastal uses and coastal access, and allows for and encourages a diverse range of uses around San Diego Bay



5

public piers

9

museums &
attractions

18

hotels

22

parks

70

artworks

74

restaurants

80+

sponsored events



Harbor Island

Embarcadero

Working Waterfront

National City Bayfront

Coronado Bayfront

Chula Vista Bayfront

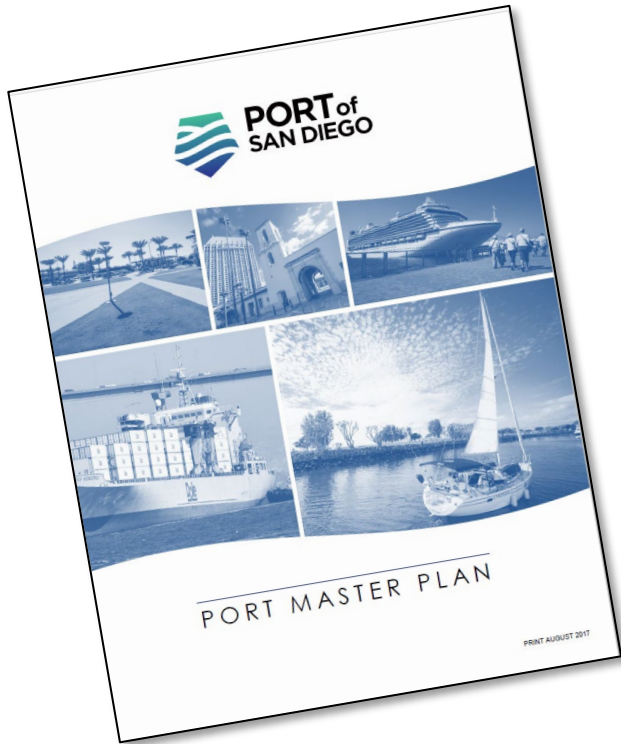
Silver Strand

South Bay

Imperial Beach Oceanfront

Port Master Plan Planning Districts

Current Port Master Plan



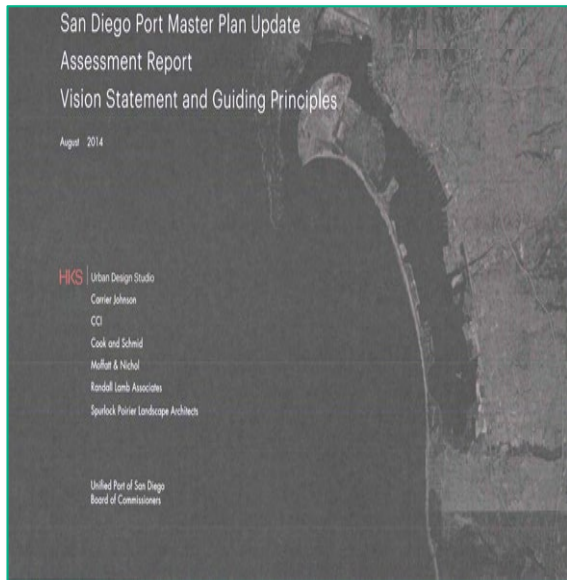
- Adopted by the Port's Board of Port Commissioners in 1972
- Certified by the California Coastal Commission in 1981
- There have been 40 location-specific amendments to this Port Master Plan that have been certified by the California Coastal Commission

Port of San Diego Port Master Plan Update



PORTof
SAN DIEGO
Waterfront of Opportunity

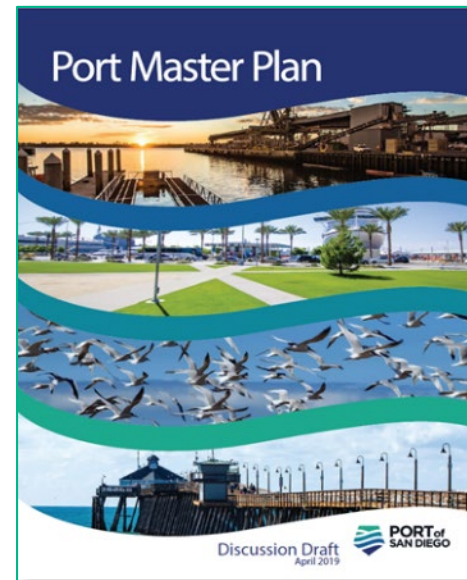
Port Master Plan Update



**Vision Statement and
Guiding Principles
2013-2014**



**Framework Report
2014-2015**



**Discussion Draft
2016-2019**

Port Master Plan Update Discussion Draft



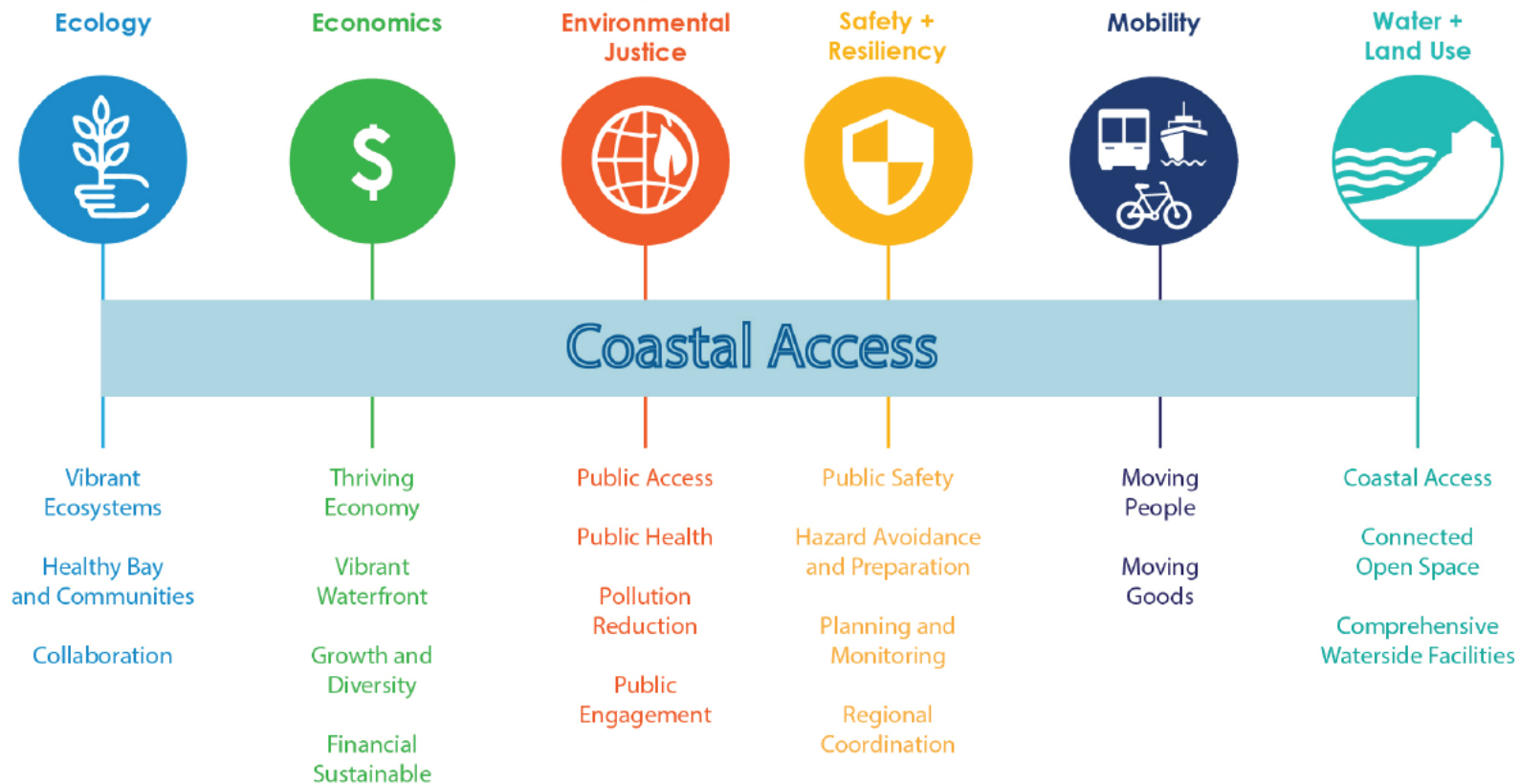
PORTof
SAN DIEGO
Waterfront of Opportunity

Port Master Plan Blueprint

The Port Master Plan provides a mix of goals, policies, and standards to guide existing uses and activities, as well as future development, activation, and management of Tidelands.



Key Elements to Achieve Coastal Access



PMPU Discussion Draft - Contents

1. Background

2. User Guide

3. Elements

Coastal
Access



Ecology



Economics



Environmental Justice



Safety & Resiliency



Mobility



Water & Land Use

4. Planning Districts

5. Appendices

PMPU Discussion Draft - Contents

1. Background

2. User Guide

3. Elements

4. Planning Districts

5. Appendices*

PD1	Shelter Island
PD2	Harbor Island
PD3	Embarcadero
PD4	Working Waterfront
PD5	National City Bayfront*
PD6	Chula Vista Bayfront*
PD7	South Bay* <i>(Pond 20 Only)</i>
PD8	Imperial Beach Oceanfront
PD9	Silver Strand
PD10	Coronado Bayfront

Similar contents as current Port Master Plan

But in a more user-friendly format

- B** BACKGROUND
- G** GOALS
- O** OVERVIEW
- P** POLICIES
- T** TABLES
- D** DIAGRAMS
- I** IMAGES
- M** BAYWIDE WATER AND LAND USE MAP

B

G

D

ELEMENT USER GUIDE

BACKGROUND

The District has a long history of championing environmental and sustainability initiatives. In 2010, the District adopted the Port of San Diego Environmental and Sustainability Policy, which serves as a guiding principle for all District activities. The Port Master Plan continues this legacy by building on sustainable environmental goals and initiatives, as well as existing District policies, to ensure the Port remains a leader in sustainability and environmental stewardship.

The District's commitment to sustainability is reflected in its various initiatives, including the Port of San Diego Green Building Program, the Port of San Diego Sustainability Report, and the Port of San Diego Environmental and Sustainability Policy. These initiatives are designed to reduce the Port's carbon footprint, conserve resources, and protect the environment.

The District's commitment to sustainability is also reflected in its various programs, including the Port of San Diego Green Building Program, the Port of San Diego Sustainability Report, and the Port of San Diego Environmental and Sustainability Policy. These programs are designed to reduce the Port's carbon footprint, conserve resources, and protect the environment.

Source: Port of San Diego

Mobility Goal 1: Integrated coastal public access

Overview

Allowing the public to access and enjoy the Bay and Waterside is a key component of the Port's mission. This goal is a responsibility entrusted to the District by the Port Act. The following policies are designed to ensure that the public has safe and easy access to the waterfront, while also protecting the Port's infrastructure and the environment.

Policies

Policy 1.1: Provide the consistency of and public accessibility to public docks, ship moorings, anchorages, and piers.

Policy 1.2: When major redevelopment or new development is proposed, ensure that the project includes provisions for public access to the waterfront, including walkways, bike paths, and other recreational facilities.

Source: Port of San Diego

Mobility Goal 2: A diverse, people-centric mobility network

Overview

Safe, convenient, and reliable mobility is essential for the Port's success. This goal is a responsibility entrusted to the District by the Port Act. The following policies are designed to ensure that the public has safe and easy access to the waterfront, while also protecting the Port's infrastructure and the environment.

Policies

Policy 2.1: Provide a safe and secure environment for pedestrians and cyclists, including sidewalks, crosswalks, and bike lanes.

Policy 2.2: Provide a safe and secure environment for transit users, including bus stops, train stations, and other transit facilities.

Figure 2.1-1: A mobility hub should connect multiple modes of transit and provide a safe and secure environment for all users.

Similar contents as current Port Master Plan

But in a more user-friendly format

C DISTRICT SETTING, CHARACTER, AND CHARACTERISTICS

P PLANNING DISTRICT MAP

S STANDARDS

A APPEALABLE PROJECTS

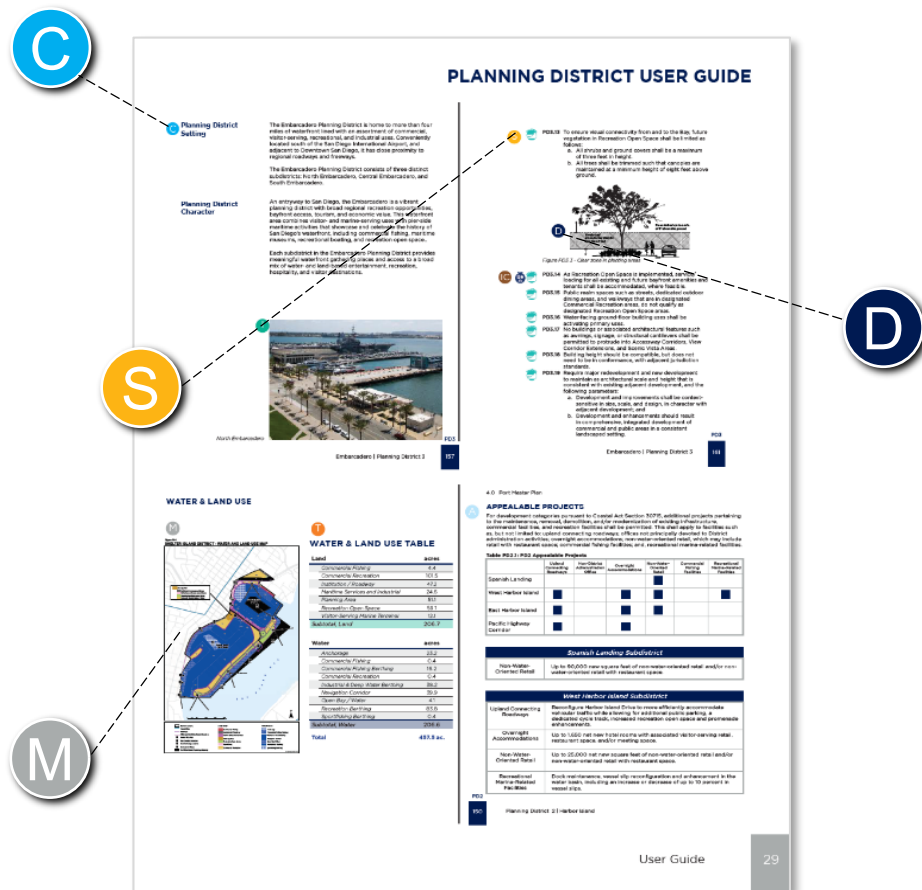
T TABLES

D DIAGRAMS

I IMAGES

M WATER AND LAND USE MAP

IC ICONS



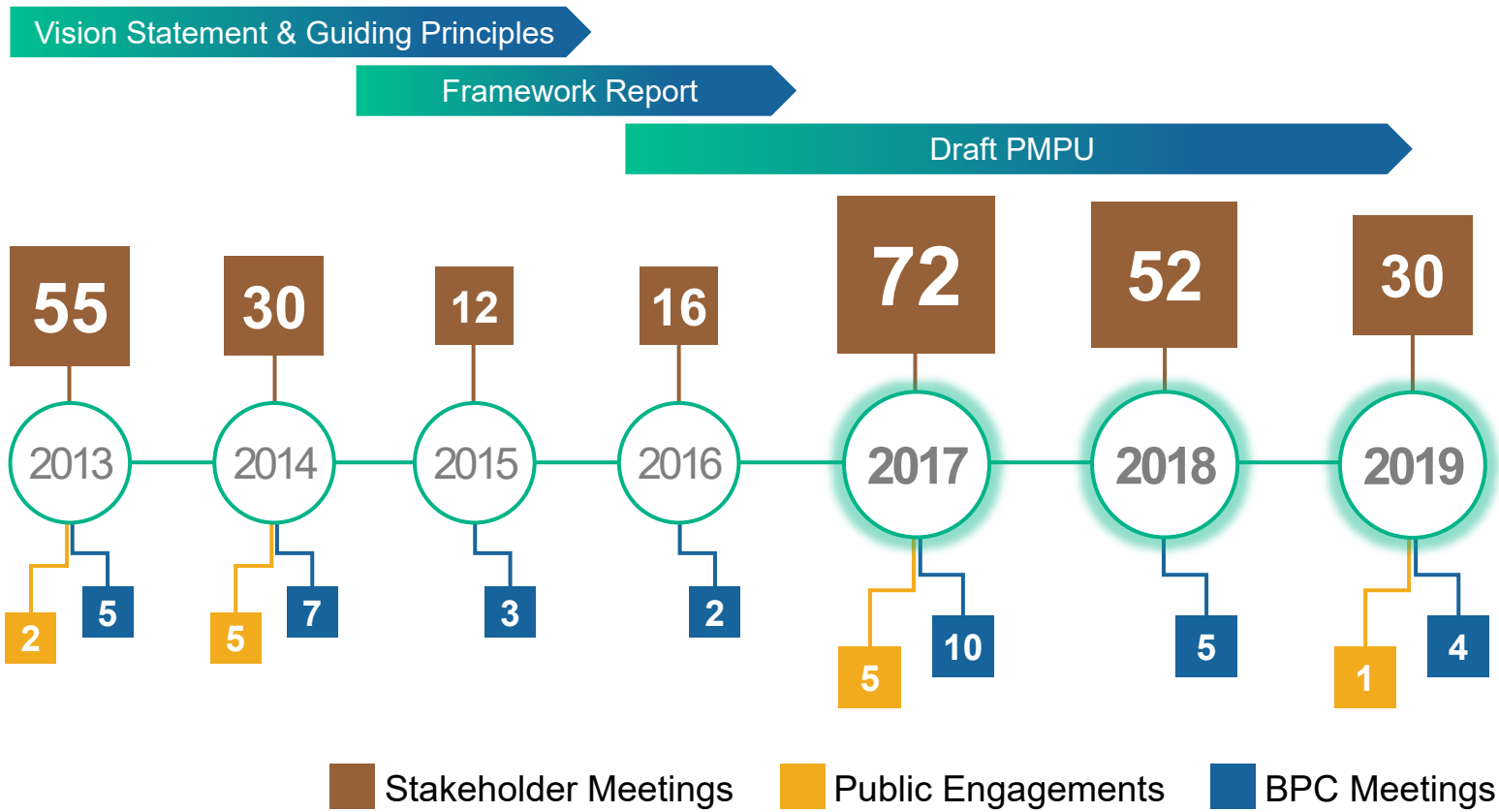
PMPU Discussion Draft

Next Steps



PORTof
SAN DIEGO
Waterfront of Opportunity

Public Outreach and Stakeholder Engagement



The Future of San Diego Bay: A Community Discussion

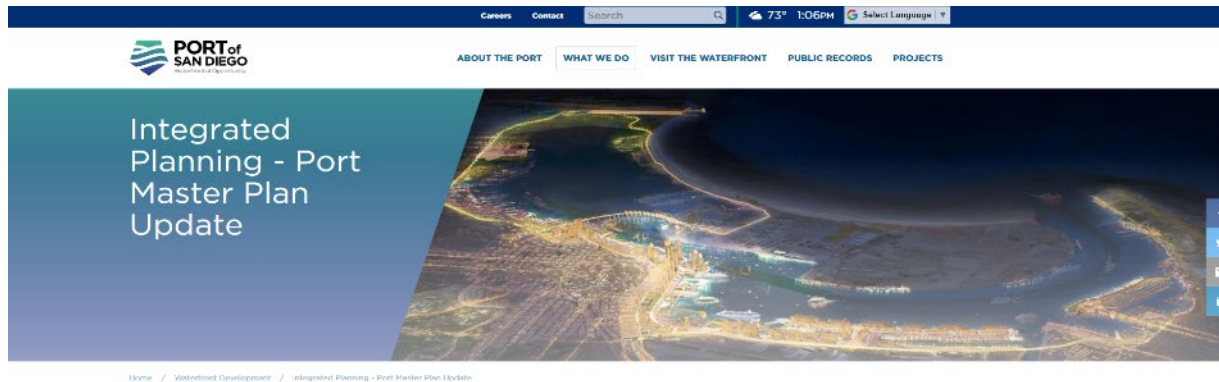
A series of community discussions for San Diego-area residents to learn about the PMPU Discussion Draft

- **June 6:** Port of San Diego Administration Building, 3165 Pacific Highway, San Diego, CA 92101
- **June 12:** La Mesa Community Center, 4975 Memorial Drive, La Mesa, CA 91942
- **June 20:** Palomar College Rancho Bernardo Education Center, 11111 Rancho Bernardo Road, San Diego, CA 92127
- **June 27:** Tijuana River National Estuarine Research Reserve, 301 Caspian Way, Imperial Beach, CA 91932

Each event begins at 5:30 pm with a presentation, then attendees will be able to ask questions of Port staff about the Discussion Draft and how to provide written comment.



How to Comment



The Future of the Port

The Port of San Diego has been conducting an Integrated Planning initiative that is often referred to as "The future of the Port." This Port is in the first, policy-development phase of its projected multi-year, five-phase planning process. The Port is currently in the process of drafting the policy document, along with additional public outreach at every step of the way.

- **Discussion Draft available on the Port's webpage**
- **Available for review through July 31, 2019**
- **Submit written comments to:**
 - PMPU@portofsandiego.org
 - 3165 Pacific Highway, San Diego, CA 92101

Port of San Diego

Port Master Plan Update

Lesley Nishihira
Director, Planning

Wednesday June 12, 2019

Discussion Draft Community Discussion Series



