

SOJOURNER

Adam Belt

Port Spaces 03

32°42'56.2"N 117°10'35.7"W





SOJOURNER

Adam Belt

April 13 - 29, 2018

Port Spaces 03
32°42'56.2"N 117°10'35.7"W

Commissioned by
Waterfront Arts & Activation
Port of San Diego

ISBN 978-0-9998531-2-2



“... walking onto a pier
out over the water ... in
an effort to enter into the
openness of the ocean or
bay while escaping the
confines of the city. The
sense of time slows while
the sense of space is more
expansive highlighted by
the distant horizon.”

Adam Belt







SOJOURNER

For two weeks in April 2018, people who strolled, jogged, and biked to the end of Broadway Pier encountered an unexpected architectural structure. Those who were drawn to explore this curious art-room were brought into another kind of space entirely. They found themselves on a catwalk over a shallow reflecting pool, whose surface rippled from the wind as well as from their own movement and steps. Flanked by two inward-facing floor-to-ceiling mirrors, reflections of the surrounding landscape, the pool, and of visitors themselves, repeated infinitely. During the twilight hours a single light source embedded in the ceiling cast light on the pool, projecting undulating patterns from the water's surface up onto the ceiling. In the quiet darkness of night, an infinite depth of rippling projections on the ceiling framed a vantage where the landscape and its reflection became indistinguishable.

Sojourner, by artist Adam Belt, comprises the third installment of the Port Spaces curatorial program at the Port of San Diego. Since 2016, this program has commissioned temporary public artworks on Port Tideland located throughout the Port District's five member cities. By definition, these projects

*Left: Modular stage
rigging formed
Sojourner's structural
frame*



Above and opposite, bottom:
A Thing is a Hole in a Thing it is Not (2010)
 Plywood, mirrors, light, 36 x 48 x 84 inches

challenge the conventional formats of more permanent public art, opening the field to works that focus on place-making, engaging the community through creativity, and multi-sensory experiences. Belt's work frequently incorporates sensory elements, employing light, simple mechanisms of reflection, and minimalist compositional strategies that evoke the sublime in the mundane.

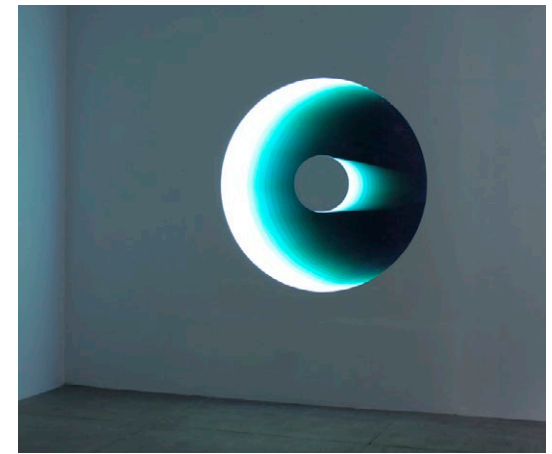
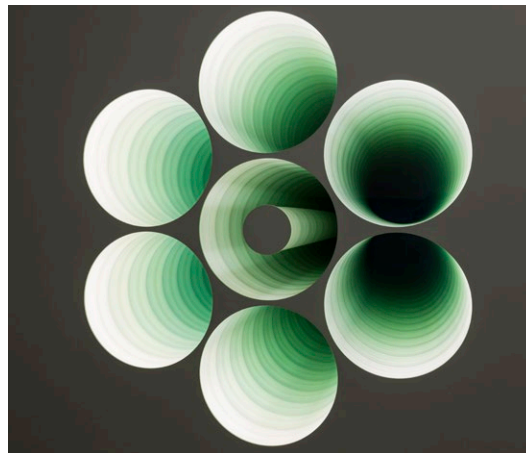
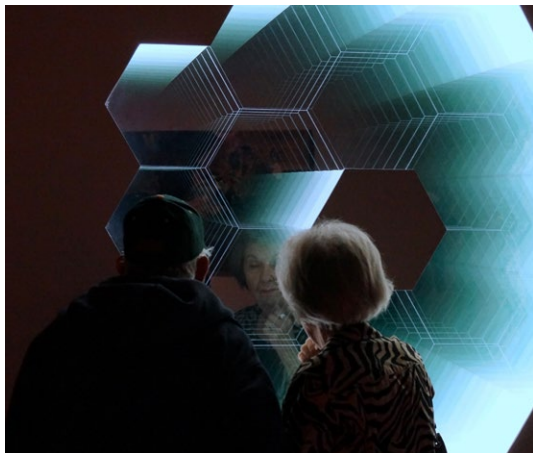
The "infinity mirror" (two mirrors facing each other to produce infinite reflections) at work in *Sojourner*, is a simple illusion to produce, yet with far-reaching metaphorical potential. In Belt's earlier projects, including the *Through the Looking Glass* (2012) series, and *A Thing is a Hole in a Thing it is Not* (2010), infinity mirror configurations are inlaid in gallery walls or in a simple portable structure that can be implemented at various locations. These past projects of Belt's established a significant precedent for *Sojourner*: the illusion of infinite depth is enriched by the reflections of the surrounding context. An excerpt from Belt's proposal:

"I was thinking specifically of walking onto a pier out over the water usually in an effort to enter into the openness of the ocean or bay while escaping the confines of the city. The sense of time slows while the sense of space is more expansive highlighted by the distant horizon."

While *Sojourner's* title was a strong allusion to Broadway Pier's primary function as a cruise ship terminal, since the pier is otherwise publically accessible, a more general set of evocations is apparent. If we are drawn to the waterfront because of what the vastness of the horizon allows our imaginations to conjure, then *Sojourner* crystalized and accentuated this experience. Parsing the reflections from reality was at once a playful challenge and a calming mantra. The quiet reflecting pool, a microcosm of the bay and ocean just yards away, managed to dazzle us with its pattern projections while offering a contemplative respite from the urban bustle all around it.

In both its architectural presence and experiential effects, *Sojourner* compelled our exploration of San Diego Bay's public tidelands and offered a unique way to contemplate them. With this publication, we hope to reproduce a glimpse of the kind of experiences that *Sojourner* engendered, and bring about a heightened awareness of the very real and enduring waterfront captured in its reflections.

Yvonne Wise, Director
 Waterfront Arts & Activation
 Port of San Diego



Through the Looking Glass (2011 - 2013)
Two-way Mirror, Mirror, Wood, LED Lights
Dimensions variable

Above: (James Webb Telescope Mirror)

Center: (After The Giant Magellan Telescope)

Right: (Hubble Telescope Mirror)

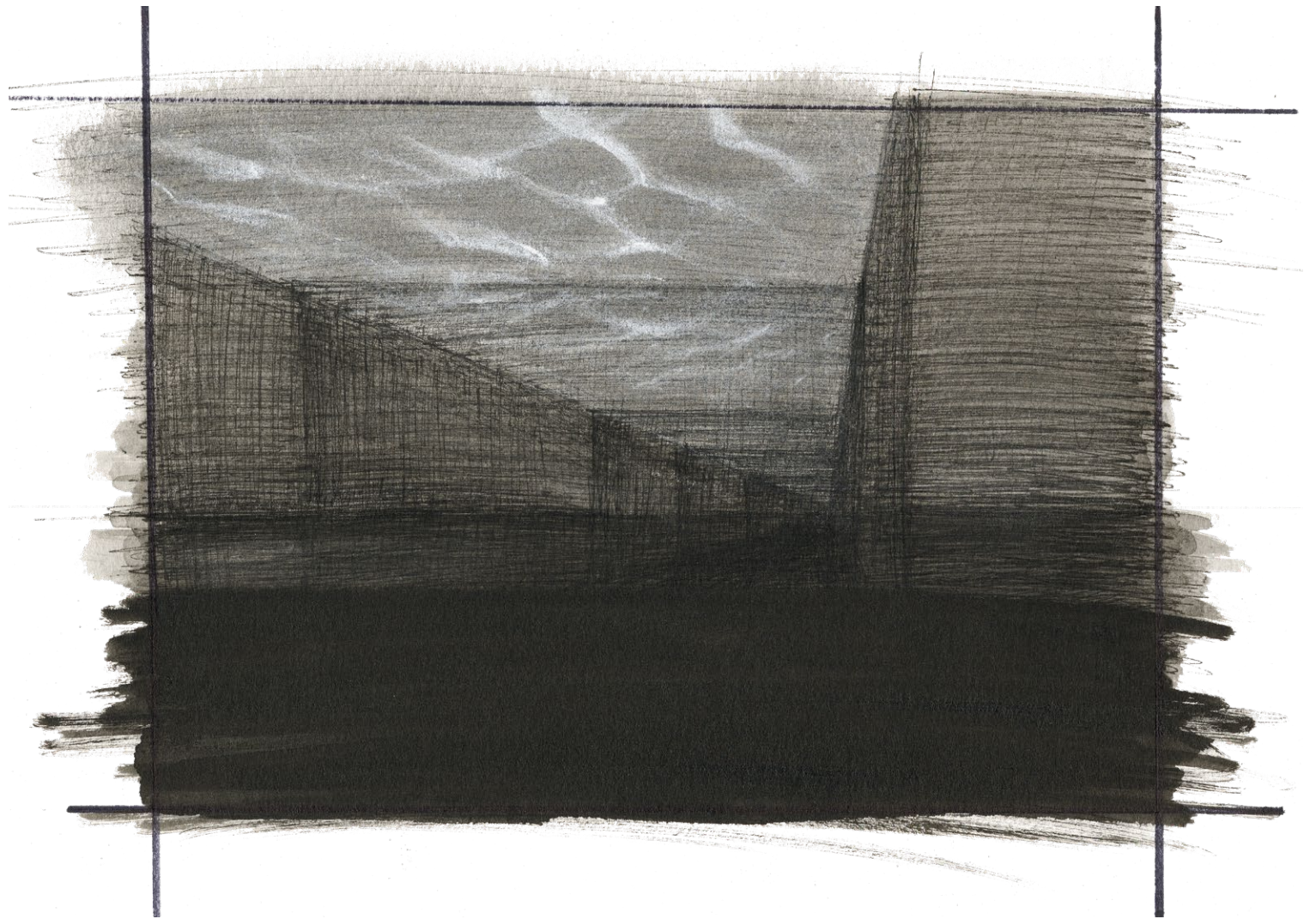




This page:
Sojourner concept
scale model in
varying lighting
conditions

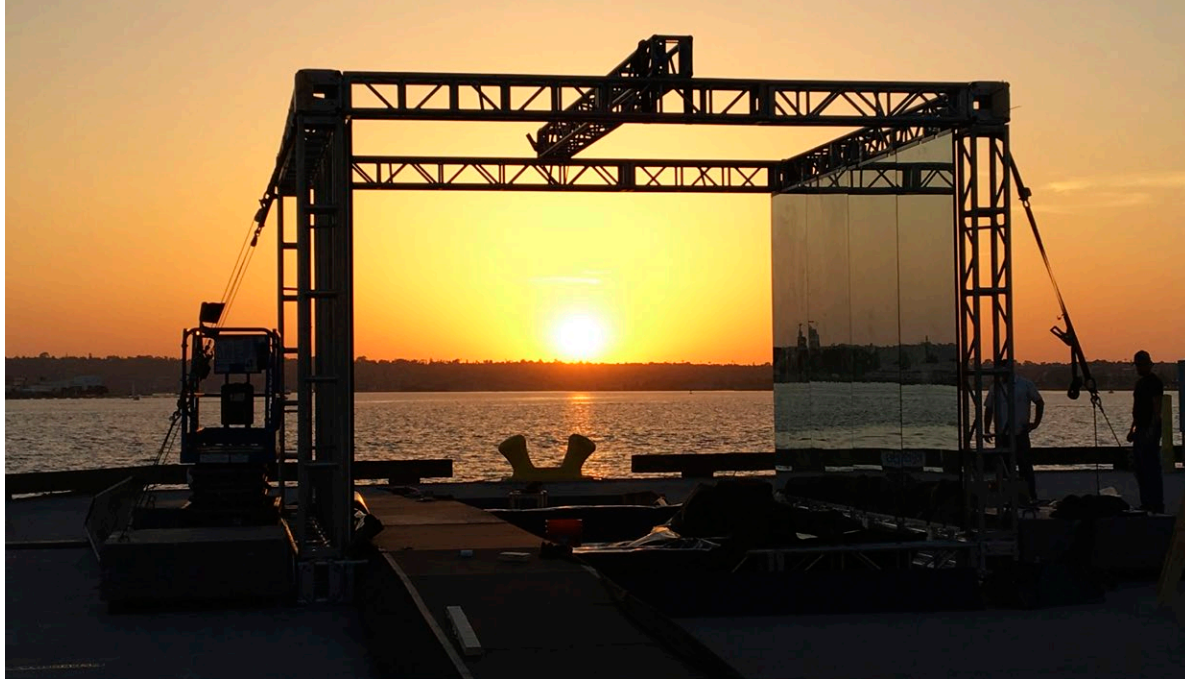
Opposite: Artist
concept rendering







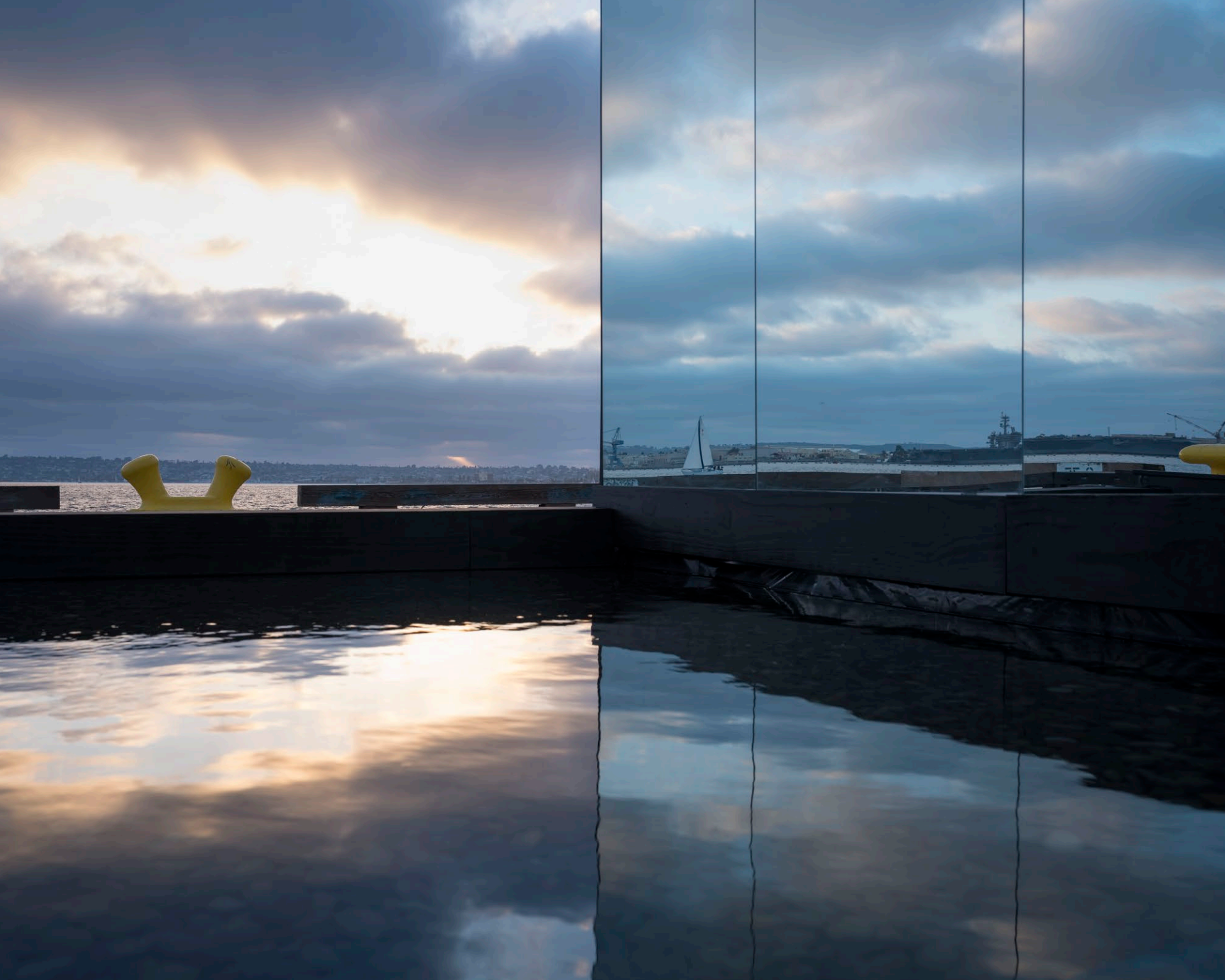
Top: Sojourner during installation



Left: Artist Adam Belt and installation crew begin mounting mirrors on modular stage rigging



Right: The finished artwork with descriptive text







“In this work, I have attempted to create a breach or cut in space by use of mirrors. Further, I am looking to create an experience that is both intimate in its small scale and movement of water while also expansive in its reflection.”

Adam Belt











3-12



SO JOURNER

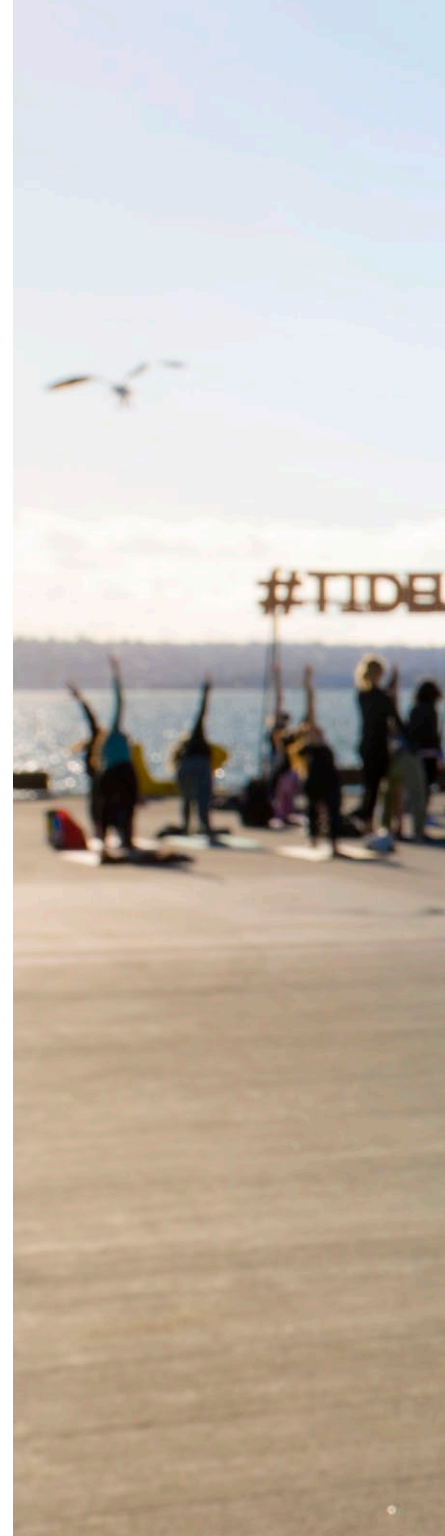
By Adam Burt
April 15 - 29, 2018

IF THE GALS
LOOK TOO
SHINY AND
YOU



Yogi **Katie B Happy** lead
yoga sessions at Sojourner's
activation events

Violinist and composer
Kristopher Apple provided
ambient, electornically-
augmented musical
accompaniment during
Sojourner's activation events.





SOJOURNER

By Adam Belt

April 13 - 29, 2018

San Diego-based artist Adam Belt has created this immersive structure which provides a sensory experience influenced by San Diego's coastal areas, wetlands, and piers. Belt's work frequently explores aspects of natural phenomena. "I am looking to create an experience that is both intimate in its small scale while also expansive in its reflection." We encourage you to walk through, and take your time experiencing Sojourner.

Sojourner was commissioned by the Port of San Diego as part of the Port Spaces public art curatorial initiative, which brings pop-up exhibitions and temporary interactive art installations to waterfront throughout the Port's five member cities: Coronado, Imperial Beach, National City, and San Diego.

El artista Adam Belt, con sede en San Diego, ha creado esta estructura inmersiva que brinda una experiencia sensorial influenciada por las áreas costeras, humedales y muelles de San Diego. El trabajo de Belt simula con frecuencia aspectos de los fenómenos naturales. "Estoy buscando crear una experiencia que sea a la vez íntima en su pequeña escala y también expansiva en su reflexión." Nos invitamos a caminar a través y tomarse su tiempo experimentando Sojourner.

Sojourner was commissioned by the Port of San Diego as part of the Port Spaces public art curatorial initiative, which brings pop-up exhibitions and temporary interactive art installations to waterfront throughout the Port's five member cities: Coronado, Imperial Beach, National City, and San Diego.

TIDE+
LAND
+ART
PORT OF SAN DIEGO

TIDE+
LAND
+ART
PORT OF SAN DIEGO



Choreographer and dancer **Dina Apple** and her collaborator, **Leslie Armstrong** perform **Sacred Geometries**, adapting the piece to the Sojourner site.

Inspired by the sacred geometry contemplative drawing practice, the piece was selected because of its aesthetic companionship with Belt's work. Music composed and performed by **Kristopher Apple**. Movement choreographed by **Dina Apple**. Spoken words by **Stephen Silke**.

Dancer **Leslie Armstrong**
performing **Sacred Geometries**





SO JOURNER

By Adam Belt
April 13 - 29, 2018

San Diego-based artist Adam Belt has created this immersive structure which provides a sensory experience influenced by San Diego's coastal area, weather, and past. Belt's work frequently simulates aspects of natural phenomena. "I am looking to create an experience that is both intimate in its small scale while also expansive in its reflection." We encourage you to walk through, sit and take your time experiencing Sojourner.

Sojourner was commissioned by the Port of San Diego as part of the Port's public art initiative, which brings pop-up exhibitions and temporary interactive artworks to the waterfront throughout the Port's five member cities: Chula Vista, Coronado, Imperial Beach, National City and San Diego.

Art by Land Art



El artista Adam Belt, basado en San Diego, ha creado esta estructura inmersiva que brinda una experiencia sensorial influenciada por las áreas costeras, climáticas y marítimas de San Diego. El trabajo de Belt simula con frecuencia aspectos de fenómenos naturales. "Estoy buscando crear una experiencia que sea a la vez íntima en su pequeña escala y también expansiva en su reflejo." Lo alentamos a caminar, sentarse y tomar su tiempo experimentando Sojourner.

Sojourner fue commissioned por el Puerto de San Diego como parte de la iniciativa cultural de arte público Port San Diego, que trae exhibiciones emergentes e instalaciones, obras de arte interactivas al mar en las cinco ciudades miembros del Puerto: Chula Vista, Coronado, Imperial Beach, National City y San Diego.









Adam Belt is a San Diego-based artist whose work incorporates the experiences and phenomena of natural forces. He is represented by Quint Gallery in La Jolla, CA and has exhibited widely in the United States. His work is in the permanent collection of the Museum of Contemporary Art San Diego.



SOJOURNER

Adam Belt

April 13 - 29, 2018

Commissioned by
Waterfront Arts & Activation
Port of San Diego

Port Spaces 03
32°42'56.2"N 117°10'35.7"W

Sojourner was commissioned as part of the Port Spaces curatorial program, a series of temporary site-specific artworks activating public spaces on Port Tidelands.

ISBN 978-0-9998531-2-2

adambelt.com

Port of San Diego
Waterfront Arts & Activation

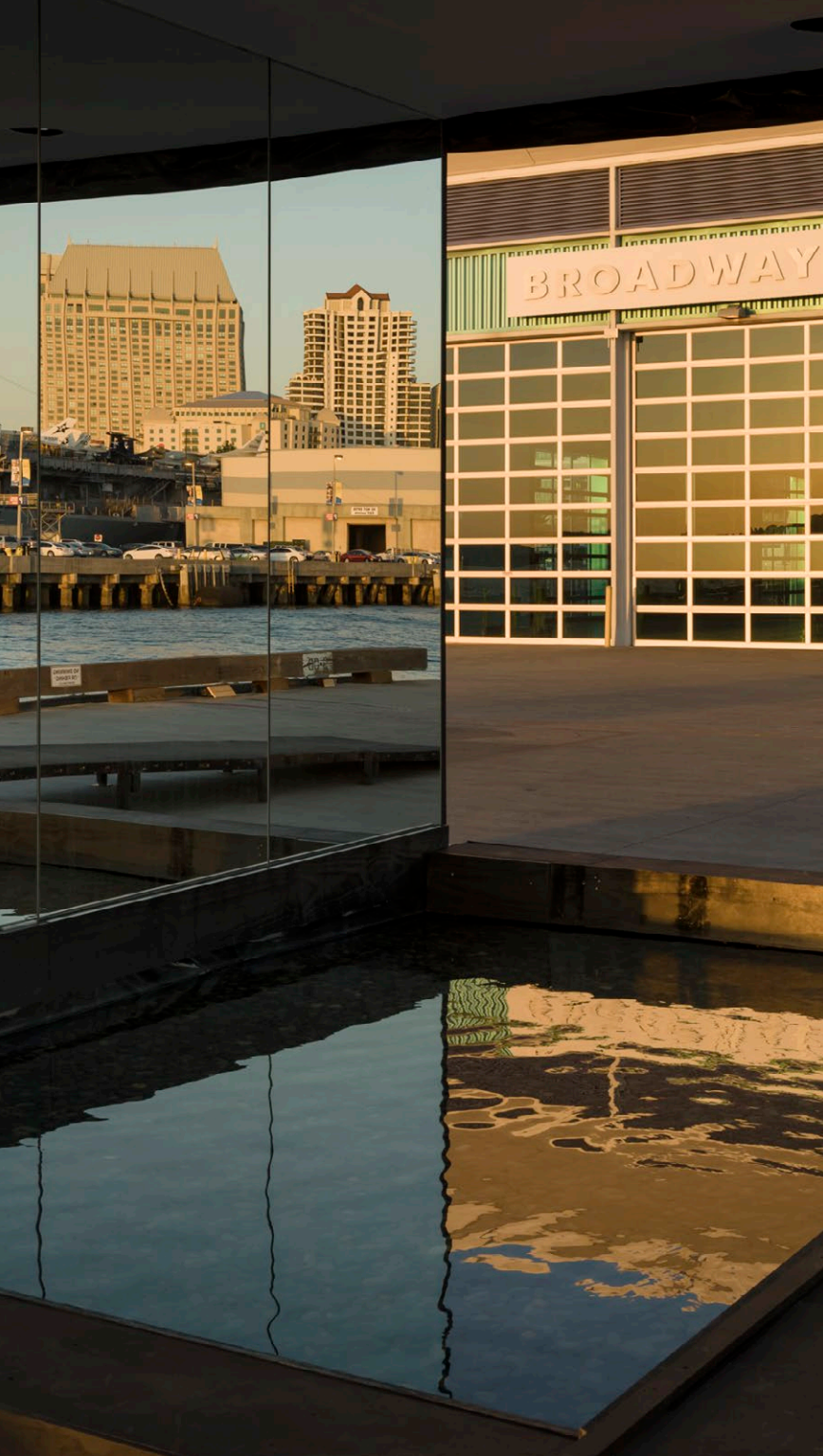
portofsandiego.org
arts@portofsandiego.org
#TideLandArt

Images and graphics on pages 6 - 9, 31
courtesy of **Adam Belt**. All rights reserved.

Images on outer front cover, outer back
cover, pages 12 - 19 courtesy of **Philip Scholz
Rittermann**.
©2018 Philipp Scholz Rittermann.

Images and graphics on inner front cover,
inner back cover, pages 1 - 4, 10, 11, 20 - 30, 32
by **Port of San Diego** and may be duplicated
with attribution to the Port of San Diego.





**PORT of
SAN DIEGO**
Experiences

ISBN 978-0-9998531-2-2