



# VESSEL SPEED REDUCTION PROGRAM

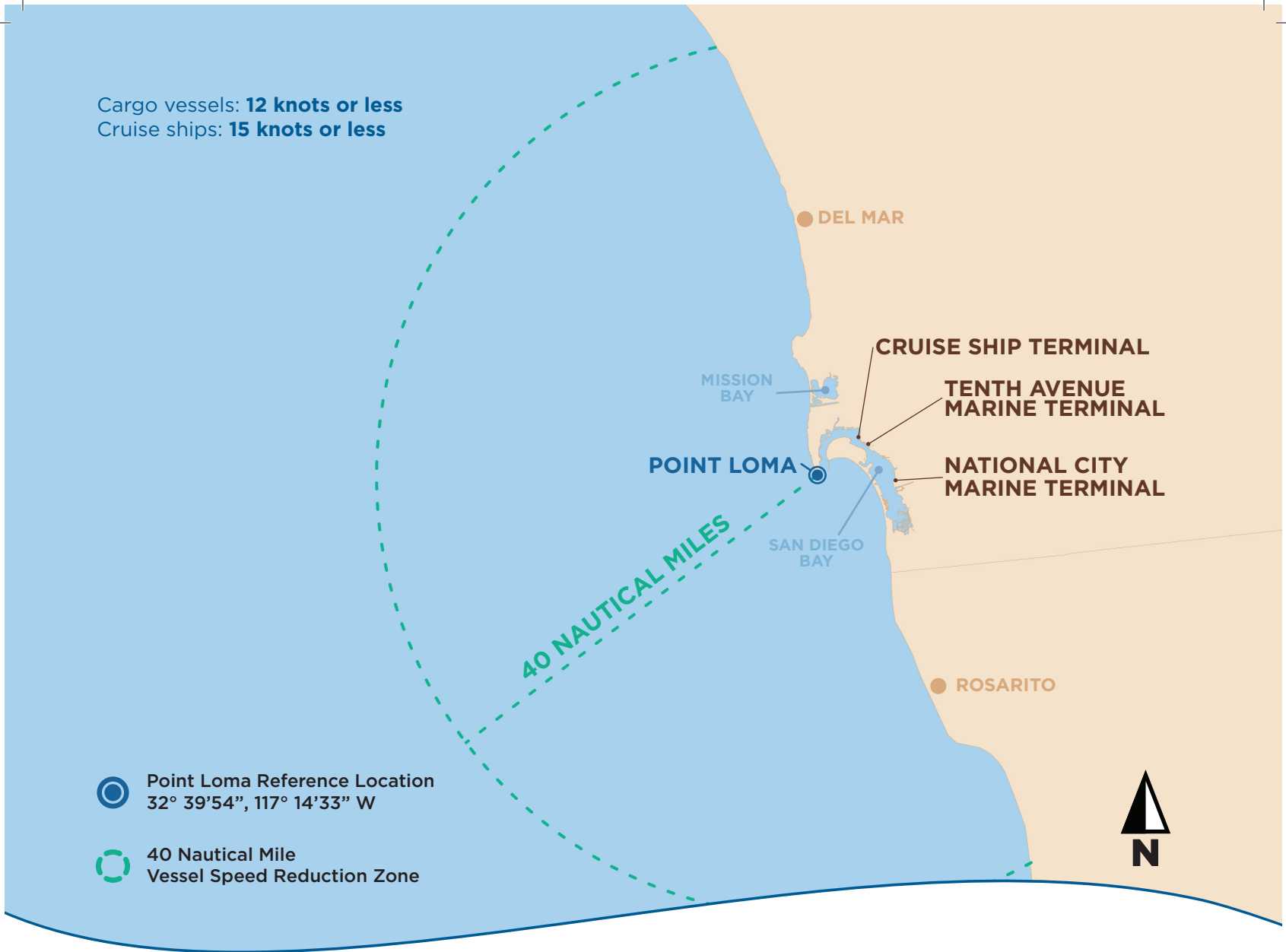
---



**PORT of  
SAN DIEGO**  
Environment

The Vessel Speed Reduction Program is an objective of the Maritime Clean Air Strategy to lower the emissions of air pollutants and greenhouse gases from cargo and cruise ships, by requiring reduced speeds in the vicinity of San Diego Bay. Reducing vessel speeds can decrease air emissions, which helps to combat climate change, protect marine life and improve air quality.

The District asks cargo vessel operators entering or leaving San Diego Bay to observe a 12-knot speed limit. For cruise ships, a 15-knot limit is requested. The Vessel Speed Reduction zone extends 40 nautical miles seaward from Point Loma. Compliance with the relevant speed is calculated by a weighted average of all speeds traveled within the zone.



### Required participation

- 90% of vessel trips within the vessel speed reduction zone will follow the vessel speed limits.
- Incentives are available for participation.

### Expected Benefits

- Slower speeds result in decreased fuel consumption which lowers emissions and reduces the cost of operating ships.
- Slower speeds also reduce vibration, noise and the potential for collisions with whales and other marine life

### Estimated Annual Fuel Savings and Emission Reductions

	Emission			Fuel Savings
	NOx	DPM	CO <sub>2</sub> e	
Reductions from Service Speed	222.5	4.3	9,791	2,794
Percent Reduction	60%	62%	63%	63%

Source: Port of San Diego Vessel Speed Reduction Program, Appendix B