

APPENDIX A

SAMPLE LOCATION TABLES AND MAPS

Table A-1. 2013 RHMP Proposed and Actual Sampling Locations and Strata

STATION	PROPOSED LATITUDE	PROPOSED LONGITUDE	ACTUAL LATITUDE	ACTUAL LONGITUDE	DISTANCE BETWEEN ACTUAL & PROPOSED (meters)	RHMP 2013 STRATUM & SAMPLE TYPE	B13-STRATUM	REGION
B13-8013	32.62351	-117.13374	32.62360	-117.13346	28.1	Marina - Grabs	Marina	San Diego Bay - South
B13-8014	32.62650	-117.13465	32.62654	-117.13468	5.06	Marina - Grabs	Marina	San Diego Bay - South
B13-8017	32.63191	-117.13096	32.63157	-117.13084	39.5	Shallow - Grabs and Trawl	Shallow	San Diego Bay - South
B13-8018	32.63403	-117.10721	32.63417	-117.10733	19.2	Shallow - Grabs	Shallow	San Diego Bay - South
B13-8020	32.64183	-117.13123	32.64179	-117.13141	17.8	Shallow - Grabs and Trawl	Shallow	San Diego Bay - South
B13-8028	32.64665	-117.11931	32.64660	-117.11935	6.52	Freshwater-Influenced - Grabs	Freshwater	San Diego Bay - South
B13-8029	32.64680	-117.11780	32.64690	-117.11824	42.6	Freshwater-Influenced - Grabs and Trawl	Freshwater	San Diego Bay - South
B13-8030	32.64714	-117.11661	32.64727	-117.11667	15.9	Freshwater-Influenced - Grabs	Freshwater	San Diego Bay - South
B13-8031	32.64747	-117.12142	32.64758	-117.12148	13.8	Freshwater-Influenced - Grabs	Freshwater	San Diego Bay - South
B13-8033	32.64776	-117.11995	32.64752	-117.11945	53.4	Freshwater-Influenced - Grabs	Freshwater	San Diego Bay - South
B13-8036	32.64828	-117.11623	32.64786	-117.11614	47.7	Freshwater-Influenced - Grabs	Freshwater	San Diego Bay - South
B13-8038	32.64857	-117.11395	32.64834	-117.11401	25.3	Freshwater-Influenced - Grabs	Freshwater	San Diego Bay - South
B13-8040	32.64896	-117.11012	32.64922	-117.11006	29.5	Freshwater-Influenced - Grabs	Freshwater	San Diego Bay - South
B13-8045	32.65143	-117.12293	32.65155	-117.12246	45.7	Deep - Grabs	Deep	San Diego Bay - Central
B13-8049	32.65607	-117.12244	32.65616	-117.12262	18.8	Industrial/Port - Grabs	Port	San Diego Bay - Central
B13-8050	32.65747	-117.12274	32.65773	-117.12311	45.2	Industrial/Port - Grabs	Port	San Diego Bay - Central
B13-8052	32.65828	-117.14434	32.65834	-117.14422	13.2	Shallow - Grabs and Trawl	Shallow	San Diego Bay - Central
B13-8053	32.65848	-117.11953	32.65837	-117.11977	25.1	Industrial/Port - Grabs	Port	San Diego Bay - Central
B13-8056	32.66033	-117.12292	32.66061	-117.12339	54.1	Industrial/Port - Grabs	Port	San Diego Bay - Central
B13-8058	32.66106	-117.14400	32.66147	-117.14410	47.0	Shallow - Grabs and Trawl	Shallow	San Diego Bay - Central
B13-8060	32.66493	-117.14993	32.66518	-117.14980	30.5	Shallow - Grabs and Trawl	Shallow	San Diego Bay - Central
B13-8064	32.67094	-117.12408	32.67096	-117.12396	11.1	Industrial/Port - Grabs	Port	San Diego Bay - Central
B13-8065	32.67134	-117.11893	32.67135	-117.11913	19.5	Industrial/Port - Grabs	Port	San Diego Bay - Central
B13-8066	32.67178	-117.12578	32.67171	-117.12532	44.1	Industrial/Port - Grabs	Port	San Diego Bay - Central
B13-8068	32.67537	-117.14385	32.67547	-117.14384	11.3	Shallow - Grabs	Shallow	San Diego Bay - Central
B13-8069	32.67594	-117.12786	32.67614	-117.12796	23.9	Industrial/Port - Grabs	Port	San Diego Bay - Central
B13-8073	32.68052	-117.17523	32.68033	-117.17476	49.2	Marina - Grabs	Marina	San Diego Bay - Central
B13-8074	32.68541	-117.13650	32.68549	-117.13652	8.90	Freshwater-Influenced - Grabs	Port	San Diego Bay - Central
B13-8075	32.68547	-117.13410	32.68561	-117.13393	22.6	Freshwater-Influenced - Grabs	Port	San Diego Bay - Central
B13-8076	32.68632	-117.13295	32.68639	-117.13332	35.5	Freshwater-Influenced - Grabs	Port	San Diego Bay - Central
B13-8077	32.68659	-117.13392	32.68651	-117.13409	17.8	Freshwater-Influenced - Grabs	Port	San Diego Bay - Central
B13-8078	32.68684	-117.14839	32.68672	-117.14859	22.8	Deep - Grabs and Trawl	Deep	San Diego Bay - Central
B13-8085	32.69111	-117.23803	32.69169	-117.23824	67.0	Deep - Grabs	Deep	San Diego Bay - North
B13-8087	32.69177	-117.15298	32.69172	-117.15322	22.9	Deep - Grabs	Deep	San Diego Bay - Central
B13-8090	32.69329	-117.14728	32.69288	-117.14758	53.7	Industrial/Port - Grabs	Port	San Diego Bay - Central
B13-8093	32.69562	-117.16262	32.69560	-117.16256	6.58	Deep - Grabs	Deep	San Diego Bay - Central
B13-8095	32.69619	-117.15341	32.69606	-117.15345	14.9	Industrial/Port - Grabs	Port	San Diego Bay - Central
B13-8096	32.69857	-117.15877	32.69852	-117.15879	6.09	Industrial/Port - Grabs	Port	San Diego Bay - Central
B13-8098	32.69981	-117.16097	32.69977	-117.16098	5.22	Industrial/Port - Grabs	Port	San Diego Bay - Central
B13-8099	32.70224	-117.16059	32.70203	-117.16082	31.5	Industrial/Port - Grabs	Port	San Diego Bay - Central
B13-8100	32.70226	-117.16198	32.70240	-117.16178	24.3	Industrial/Port - Grabs	Port	San Diego Bay - Central
B13-8102	32.71138	-117.23213	32.71154	-117.23255	43.5	Marina - Grabs	Marina	San Diego Bay - North
B13-8105	32.71234	-117.21332	32.71228	-117.21397	60.6	Shallow - Grabs	Shallow	San Diego Bay - North
B13-8106	32.71258	-117.23168	32.71233	-117.23213	51.0	Marina - Grabs	Marina	San Diego Bay - North
B13-8108	32.71450	-117.23005	32.71450	-117.23011	5.35	Deep - Grabs	Deep	San Diego Bay - North
B13-8109	32.71504	-117.18308	32.71496	-117.18291	18.4	Deep - Grabs and Trawl	Deep	San Diego Bay - North
B13-8111	32.71598	-117.17404	32.71609	-117.17395	14.9	Deep - Grabs	Deep	San Diego Bay - North
B13-8112	32.71608	-117.17615	32.71619	-117.17624	14.6	Deep - Grabs	Deep	San Diego Bay - North
B13-8113	32.71683	-117.22429	32.71689	-117.22521	86.7	Marina - Grabs	Marina	San Diego Bay - North
B13-8116	32.71810	-117.23046	32.71840	-117.23040	34.0	Marina - Grabs	Marina	San Diego Bay - North
B13-8117	32.71867	-117.22571	32.71857	-117.22611	39.3	Marina - Grabs	Marina	San Diego Bay - North
B13-8118	32.71979	-117.17863	32.71988	-117.17874	14.3	Deep - Grabs and Trawl	Deep	San Diego Bay - North
B13-8121	32.72416	-117.22484	32.72436	-117.22481	21.6	Marina - Grabs	Marina	San Diego Bay - North
B13-8122	32.72427	-117.18276	32.72415	-117.18298	24.9	Deep - Grabs and Trawl	Deep	San Diego Bay - North
B13-8123	32.72487	-117.18359	32.72502	-117.18368	18.6	Shallow - Grabs	Shallow	San Diego Bay - North
B13-8124	32.72617	-117.18665	32.72630	-117.18664	14.9	Shallow - Grabs	Shallow	San Diego Bay - North
B13-8127	32.72692	-117.20206	32.72674	-117.20252	48.0	Marina - Grabs	Marina	San Diego Bay - North
B13-8128	32.72704	-117.19195	32.72712	-117.19192	9.07	Shallow - Grabs	Shallow	San Diego Bay - North
B13-8145	32.76170	-117.23813	32.76163	-117.23822	11.3	Deep - Grabs	Deep	Mission Bay
B13-8146	32.76230	-117.23618	32.76246	-117.23621	18.1	Marina - Grabs	Marina	Mission Bay
B13-8151	32.76715	-117.23551	32.76721	-117.23561	11.2	Marina - Grabs	Marina	Mission Bay
B13-8152	32.76749	-117.24160	32.76791	-117.24148	47.4	Deep - Grabs	Deep	Mission Bay
B13-8156	32.78093	-117.24960	32.78070	-117.24928	39.2	Shallow - Grabs	Shallow	Mission Bay
B13-8157	32.78282	-117.22998	32.78294	-117.23000	13.1	Shallow - Grabs	Shallow	Mission Bay
B13-8159	32.78439	-117.21550	32.78447	-117.21536	16.3	Shallow - Grabs and Trawl	Shallow	Mission Bay
B13-8160	32.78721	-117.20868	32.78738	-117.20944	74.0	Freshwater-Influenced - Grabs	Freshwater	Mission Bay
B13-8163	32.79459	-117.21997	32.79436	-117.22016	31.3	Freshwater-Influenced - Grabs	Freshwater	Mission Bay
B13-8233	33.20485	-117.39075	33.20470	-117.39083	17.3	Marina - Grabs	Marina	Oceanside Harbor
B13-8236	33.20693	-117.39351	33.20712	-117.39361	23.9	Deep - Grabs	Deep	Oceanside Harbor
B13-8239	33.20765	-117.39742	33.20793	-117.39744	31.8	Deep - Grabs and Trawl	Deep	Oceanside Harbor
B13-8259	33.45894	-117.69773	33.45946	-117.69730	70.4	Marina - Grabs	Marina	Dana Point Harbor
B13-8263	33.46071	-117.70556	33.46066	-117.70586	27.9	Deep - Grabs and Trawl	Deep	Dana Point Harbor
B13-8265	33.46092	-117.70230	33.46095	-117.70226	4.63	Shallow - Grabs	Shallow	Dana Point Harbor
B13-8267	33.46195	-117.70205	33.46207	-117.70212	15.2	Marina - Grabs	Marina	Dana Point Harbor
B13-8500	32.72724	-117.17737	32.72705	-117.17733	21.2	Freshwater-Influenced - Grabs	Freshwater	San Diego Bay - North

2013 RHMP
Grab Sample Locations –
Proposed and Actual



**Dana Point Harbor
RHMP - Bight '13
Proposed and Actual Sampling Locations**

1 inch = 600 feet
0 300 600 Feet



FIGURE

2



**Mission Bay
RHMP - Bight '13
Proposed and Actual Sampling Locations**

1 inch = 2,500 feet
0 1,250 2,500 Feet



FIGURE

2





FIGURE

2





San Diego Bay - South
RHMP – Bight '13
Proposed and Actual Sampling Locations

1 inch = 2,800 feet
 0 1,400 2,800
 Feet



FIGURE

2



San Diego Bay - South Central
RHMP – Bight '13
Proposed and Actual Sampling Locations

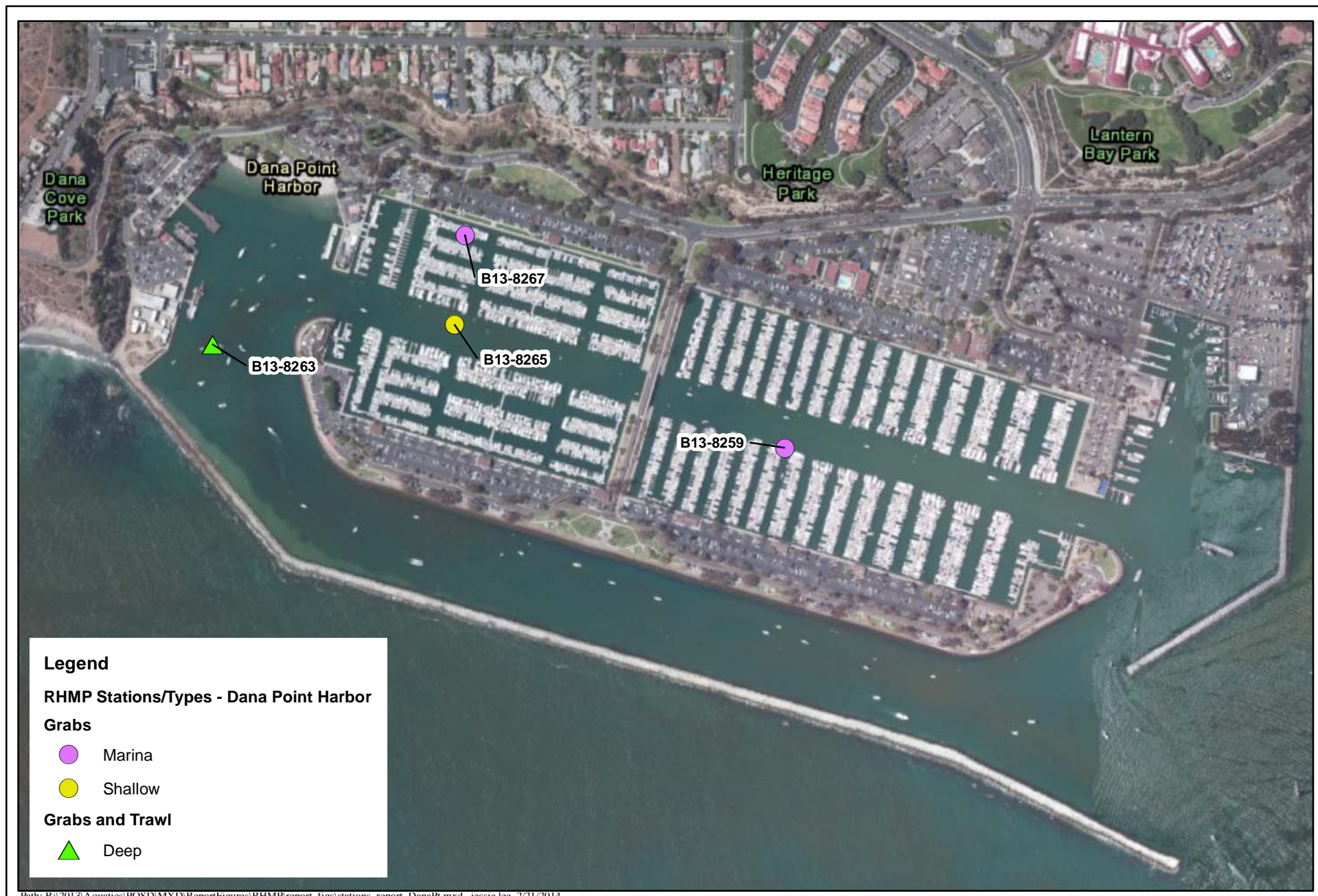
1 inch = 2,800 feet
0 1,400 2,800
Feet



FIGURE

2

2013 RHMP
Sample Locations and
Associated Strata



Path: R:\2013\Aquatics\POSD\MXD\ReportFigures\RHMP\report_figs\stations_report_DanaPt.mxd, jessie.lee 2/21/2014

Aerial Source: Esri, i-cubed, USDA, USGS, AEX, GeoEye, Getmapping, Aerogrid, IGN, IGP, and the GIS User Community



Dana Point Harbor
RHMP - Bight '13
Actual Sampling Locations

1 inch = 600 feet
 0 300 600 Feet



FIGURE

2



Path: R:\2013\Aquatics\POSD\MXD\ReportFigures\RHMP\report_figs\stations_report_Oceanside.mxd, jessie.lee 2/24/2014

Aerial Source: Esri, i-cubed, USDA, USGS, AEX, GeoEye, Getmapping, Aerogrid, IGN, IGP, and the GIS User Community

Oceanside Harbor
RHMP - Bight '13
Actual Sampling Locations

1 inch = 400 feet
 0 200 400 Feet



FIGURE

2



Path: R:\2013\Aquatics\POSD\MXD\ReportFigures\RHMP\report_figs\stations_report_MissionBay.mxd, jessie.lee 2/24/2014

Aerial Source: Esri, i-cubed, USDA, USGS, AEX, GeoEye, Getmapping, Aerogrid, IGN, IGP, and the GIS User Community

Mission Bay
RHMP - Bight '13
Actual Sampling Locations

1 inch = 3,000 feet
 0 1,500 3,000 Feet



FIGURE

2



Path: R:\2013\Aquatics\POSD\MXD\ReportFigures\RHMP\report_figs\stations_report_SDBayNorth.mxd, jessie.lee 2/24/2014

Aerial Source: Esri, i-cubed, USDA, USGS, AEX, GeoEye, Getmapping, Aerogrid, IGN, IGP, and the GIS User Community

San Diego Bay - North
RHMP - Bight '13
Actual Sampling Locations

1 inch = 2,300 feet
0 1,150 2,300 Feet



FIGURE

2



Path: R:\2013\Aquatics\POSD\MXD\ReportFigures\RHMP\report_figures\stations_report_SDBayNorthCentral.mxd, jessie lee 2/21/2014

Aerial Source: Esri, i-cubed, USDA, USGS, AEX, GeoEye, G etmapping, Aerogrid, IGN, IGP, and the GIS User Community



Path: R:\2013\Aquatics\POSD\MDX\ReportFigures\RHMP\report_figures\stations_report_SDBaySouthCentral.mxd, jessie lee 2/25/2014

Aerial Source: Esri, i-cubed, USDA, USGS, AEX, GeoEye, G etmapping, AeroGrid, IGN, IGP, and the GIS User Community

San Diego Bay - South Central
RHMP - Bight '13
Actual Sampling Locations

1 inch = 3,000 feet
0 1,500 3,000 Feet



FIGURE

2



San Diego Bay - South
RHMP - Bight '13
Actual Sampling Locations

1 inch = 2,800 feet
0 1,400 2,800 Feet



FIGURE

2

Benthic Trawl Locations



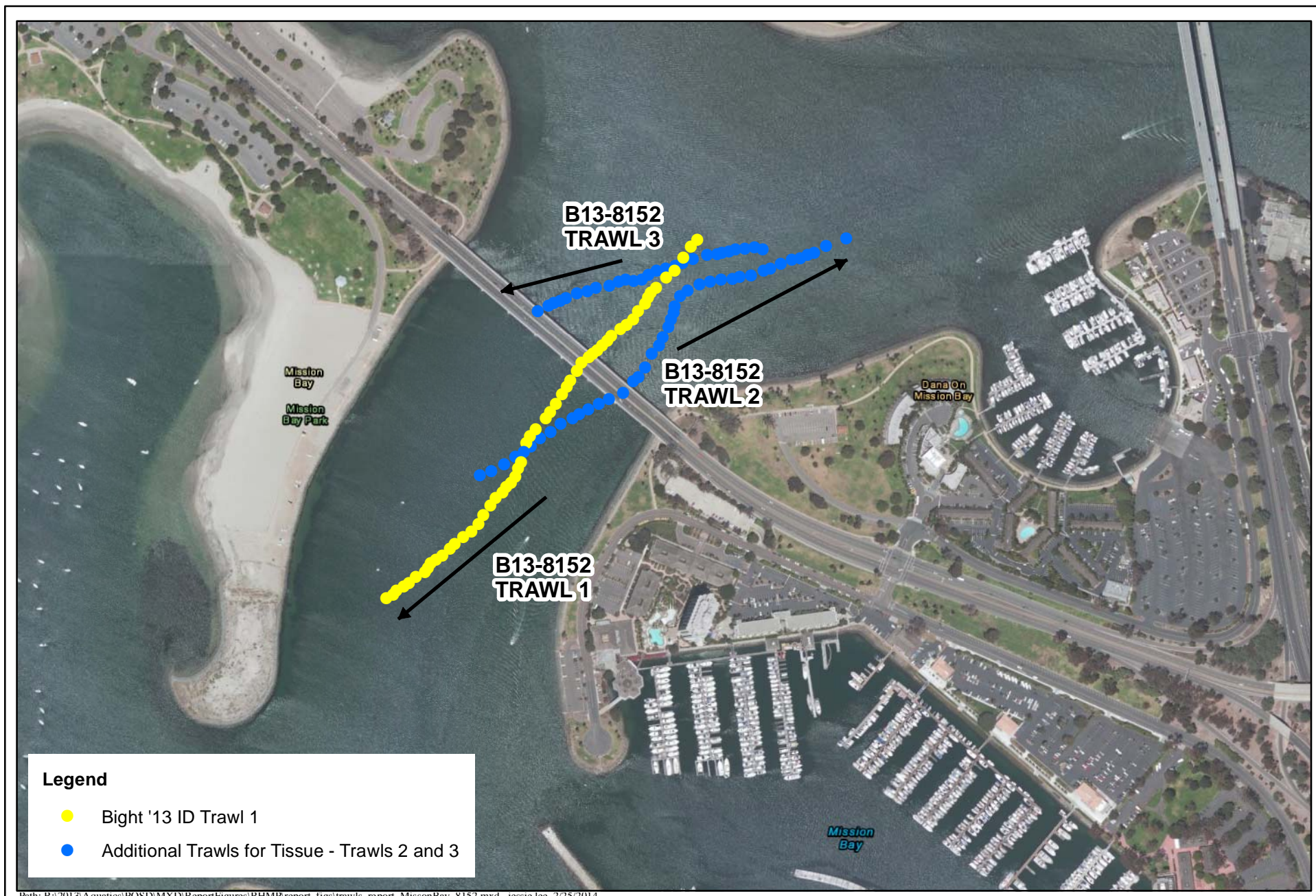
Path: R:\2013\Aquatics\POSD\MXD\ReportFigures\RHMP\report_figs\trawls_report_DanaPt.mxd, jessie.lee 2/20/2014

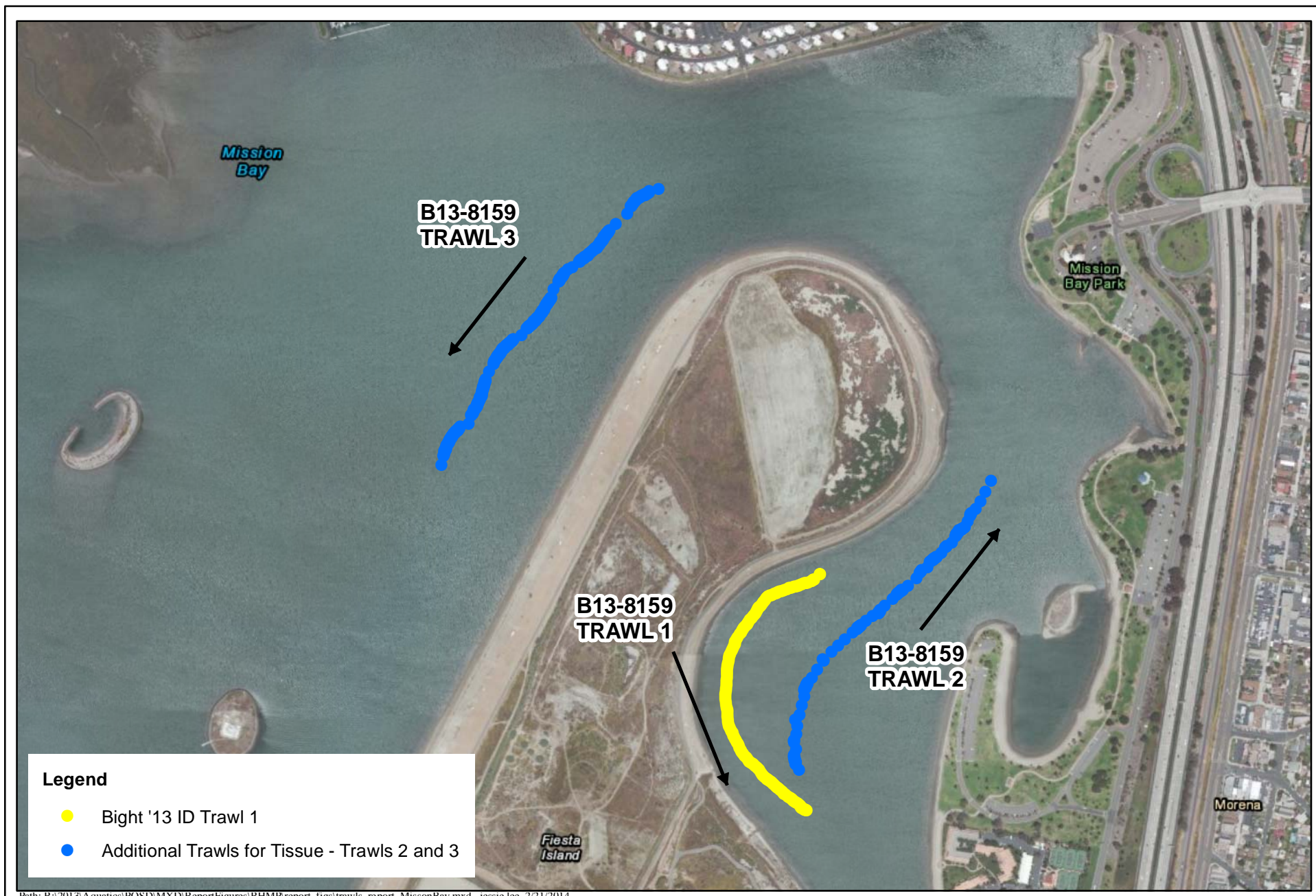
Aerial Source: Esri, i-cubed, USDA, USGS, AEX, GeoEye, Getmapping, Aerogrid, IGN, IGP, and the GIS User Community











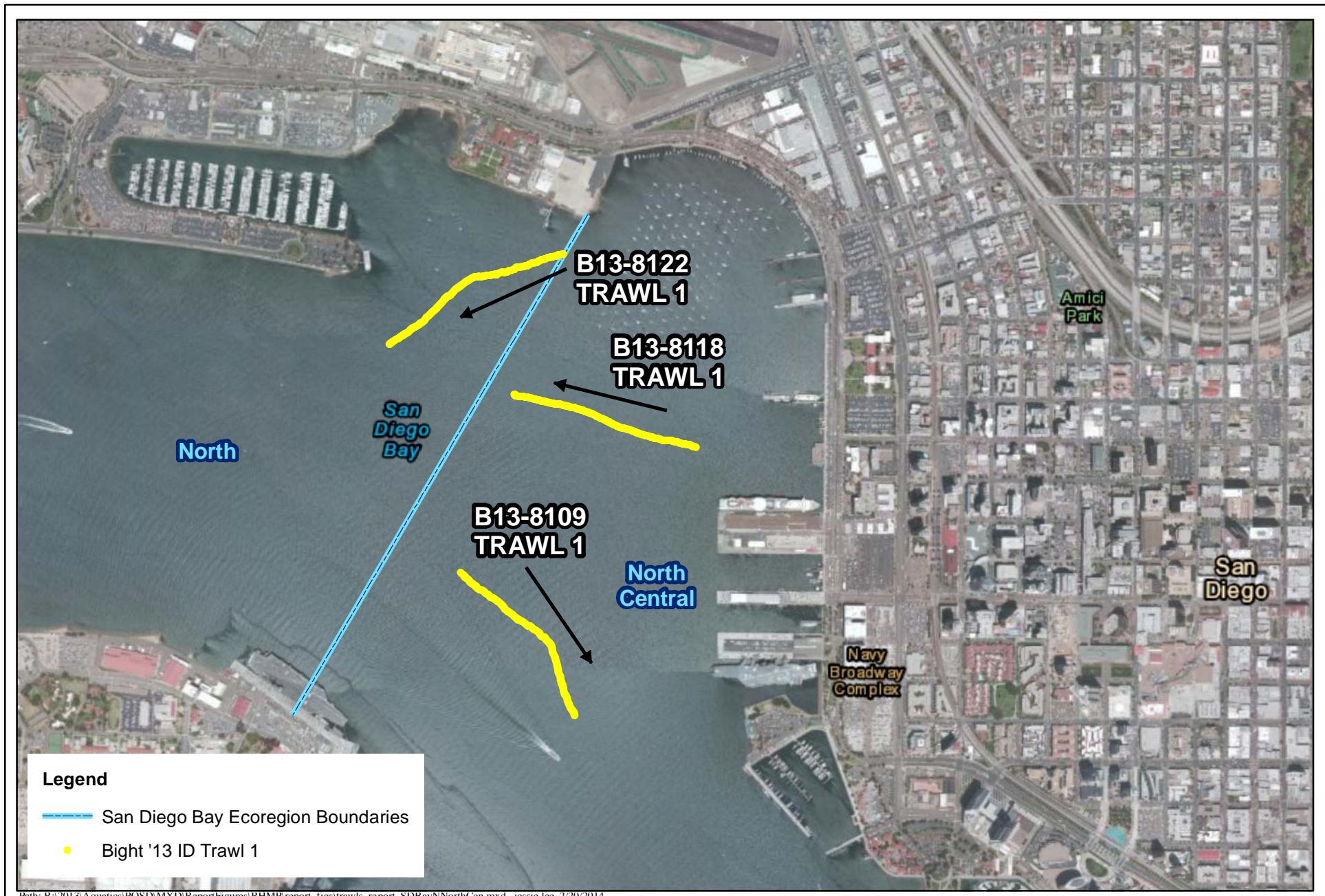
**Mission Bay - East
RHMP - Bight '13
Actual Trawl Locations**

1 inch = 750 feet
0 375 750 Feet



FIGURE

2





San Diego Bay - South Central
RHMP - Bight '13
Actual Trawl Locations

1 inch = 2,800 feet
0 1,400 2,800 Feet



FIGURE

2



San Diego Bay - South
 RHMP - Bight '13
 Actual Trawl Locations

1 inch = 1,800 feet
 0 900 1,800 Feet



FIGURE

2