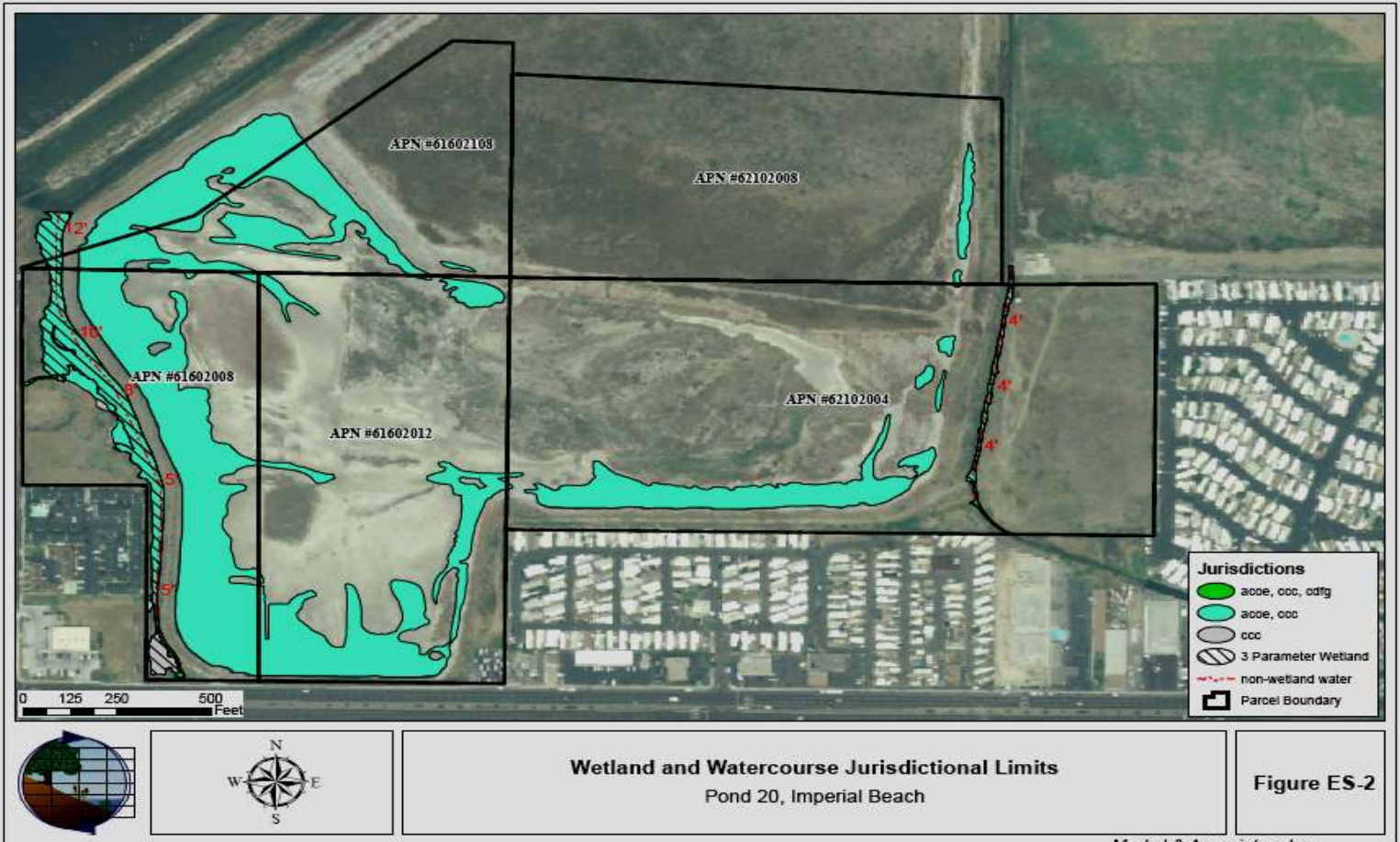


Merkel and Associates' 2008 Wetland and Watercourse Jurisdictional Limits

M&A #06-007-09



Merkel & Associates, Inc.

Key :

APN – Assessor Parcel Number

ACOE– Army Corps of Engineers

CCC – California Coastal Commission

CDFG – California Department of Fish and Game

Acres of jurisdictional watercourses by regulatory agency.

JURISDICTION	ASSESSOR PARCEL NUMBER					TOTAL
	61602008	61602012	61602108	62102004	62102008	
ACOE, CCC, CDFG	0.05			0.03		0.08
ACOE, CCC	6.08	3.11	2.16	2.10	0.22	13.67
CCC	0.18					0.18
TOTAL	6.31	3.11	2.16	2.13	0.22	13.92

AGENCY TOTAL	ASSESSOR PARCEL NUMBER					TOTAL
	61602008	61602012	61602108	62102004	62102008	
ACOE	6.13	3.11	2.16	2.13	0.22	13.75
CCC	6.31	3.11	2.16	2.13	0.22	13.92
CDFG	0.05			0.03		0.08

Acres of habitats comprising the jurisdictional waters.

HABITATS	ASSESSOR PARCEL NUMBER					TOTAL
	61602008	61602012	61602108	62102004	62102008	
Coastal Salt Marsh	1.39		0.03	0.16		1.58
Freshwater Marsh/Flat	0.05			0.03		0.08
Salt Flats/Pond	4.68	3.11	2.13	1.94	0.22	12.07
Salt Pans	0.19					0.19
TOTAL	6.31	3.11	2.16	2.13	0.22	13.92

Source: pp. 3-4 Merkel and Associates' Jurisdictional Wetland Delineation Report For Western Salt Pond 20 Imperial Beach, California August 18, 2008
 Prepared for San Diego Unified Port District 3165 Pacific Hwy San Diego, CA 92101
 Prepared By Merkel and Associates Inc. 5434 Ruffin Road San Diego, CA 92123
 Phone: (858) 560 5465
 Fax: (858) 560 7779